

**University of Missouri System
Undergraduate Financial Aid Summary Report
FY2003-FY2007**

(Missouri Resident Undergraduate Students)

Report Prepared by
Dr. La Shonda Carter-Boone
Senior Institutional Research Analyst

Office of Institutional Research and Planning
722 Lewis Hall
University of Missouri System

September 2008

IR&P 2008, Report 1

Boonel@umsystem.edu
573-884-3104

- The number of institutional grants awarded based on need has more than doubled over the past five years. There has also been an increase in the number of merit awards given to students both with and without need (Table 1.1).
- Missouri resident undergraduate students in the lower income categories have the highest grant aid as a percentage of educational and required fees. However, over the past five years the amount of grant aid that covers educational and required fees has declined (Table 1.2).
- The volume of Parent Loans for Undergraduate Students (PLUS loans) has increased substantially from FY03 to FY07 for both students with and without financial need. In FY03, 2,261 parents borrowed on average \$6,869 to meet their child's education expenses. Five years later, 3,414 parents borrowed approximately \$8,939 to cover these expenses. System-wide, the amount of PLUS loans nearly doubled over the past five years from \$15.5 million in FY03 to 30.5 million in FY07 (Table 1.4).
- Students with incomes less than \$40,000 have the highest amount of financial need and receive larger total financial aid awards than higher income students. However, lower income students continue to have the largest amount of unmet financial need (Figure 1.4).
- The unmet financial need of students increased in all income levels over the past five years (Figure 1.5).

Campus-specific variations from System trends:

- On the Columbia campus, the average amount of grant aid awarded to students in lower incomes exceeded educational and required fees in both FY03 and FY07. This was also the case at Missouri S&T in FY07 (Table 2.2).
- Low-income students on the Kansas City and St. Louis campuses have a much larger amount of unmet need when compared to students in the same income categories on the other campuses (Figures 3.5 and 5.5).
- Nearly 82% of the total amount of PLUS loans distributed System-wide in FY07 were awarded on the Columbia campus.

The contextual basis of financial aid distribution

Less than 20% of undergraduates attending the University of Missouri pay the entire cost of attendance out-of-pocket. The majority of students receive some type of financial assistance to attend the University in the form of grants, scholarships, work study or loans. In addition, financial

Foremost, a BUDGETED COST OF ATTENDANCE (COA) is determined for every student that completes a FAFSA. The COA varies by student and is based on factors such as residency status, load status (full or part-time), and living arrangements (on or off-campus). Next the amount that the family is expected to contribute to cover the COA is determined based on several factors, including the family's adjusted gross income. A student's financial need is determined by subtracting the EXPECTED FAMILY CONTRIBUTION from the budgeted COA. If the calculated value of FINANCIAL NEED is positive, the student is eligible to receive need-based assistance such as pell grants, college work study and need based loans. A student's REMAINING NEED is determined after subtracting GRANT AID (aid that does not have to be repaid) from the FINANCIAL NEED. After subtracting the remaining sources of financial aid (i.e. work study, need-based loans, and alternative loans), an UNMET NEED value is determined, which is the remaining amount of money a student needs to meet the COA after all financial assistance has been provided.

Caveats

Although Figure A.1 provides a good example of how financial aid packages are determined for students, a few caveats are worth mentioning:

1. The unmet need value is based on all of the financial aid that a student ACCEPTED which does not always equal the amount of aid a student was OFFERED. For example, a student might decline a need-based loan or alternative loan which would have covered the student's remaining cost of attendance. That student would have unmet financial need even though ample aid was offered to meet the budgeted COA.
2. A student's financial need might change during the academic year based on changes to the student's budgeted COA. For example, a student might live on-campus the first semester and decide to live off-campus the next semester.
3. Many students take part-time jobs to meet the COA. However, the compensation received from part-time jobs (other than college work study) is not documented and does not count towards meeting the COA. In essence, many students work to meet the COA and for these students the true unmet need is unknown.
4. Many families borrow the "expected family contribution" and the amount borrowed is not factored into the total financial aid package, i.e. it is not counted as financial aid. Therefore, in many cases, the true financial need of a student is underestimated.

Section I

System-wide Financial Aid Trends of Full-Time, Degree-Seeking Missouri Undergraduates from FY03 to FY07

PLEASE NOTE: The findings below highlight system-wide trends at the University of Missouri. Financial aid trends may differ by campus and are included in the second part of this report.

A. How many students received aid and what type of aid was received?

The total number of full-time, degree-seeking resident undergraduates steadily increased over the past five years from 26,801 to 29,460, an increase of nearly 10%. With this increase in enrollment, there has been a 15.3% increase in the number of students with financial need from 13,030 in FY03 to 15,029 in FY07 (Figure 1.1).

B. Has grant aid kept pace with increases in educational and required fees?

Over the past five years educational and required fees increased 36.2% and the budgeted cost of attendance increased 27.7% while average grant aid has increased 30.2%. The overall trend is that there is a consistent gap between educational and required fees and the average grant aid awarded to undergraduates (Figure 1.2).

C. How has the distribution of institutional gift aid changed over the past five years?

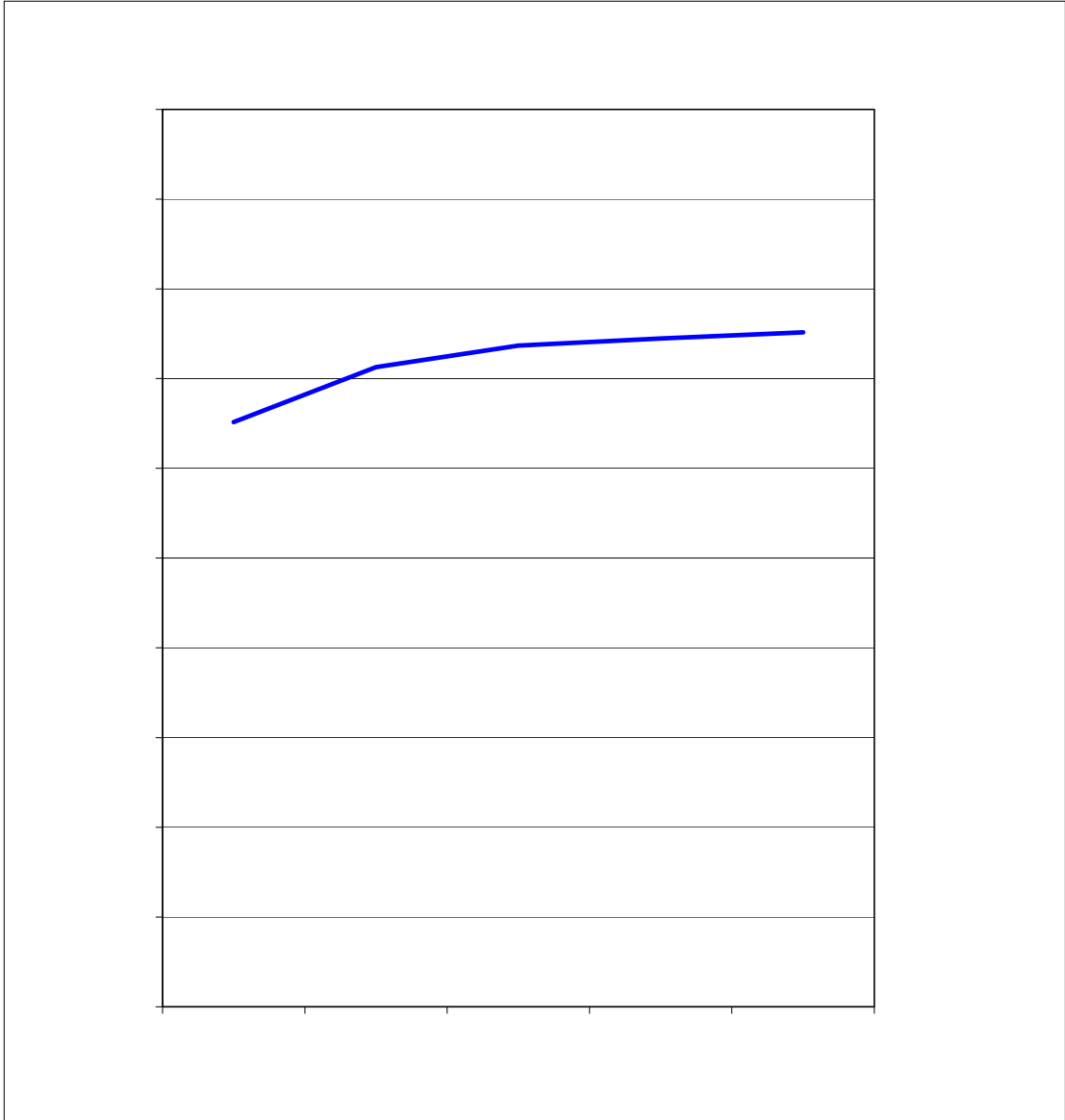
The number of awards that went to students with need from institutional sources increased substantially over the past five years. In FY03 nearly 65% of all institutional grant aid awarded to students with need was awarded based on merit and 26% was awarded based on need. By FY07 only 49% of all institutional grant aid awarded to students with need was based on merit and 40% was based on need (Table 1.1).

D. How has the distribution of PLUS loans changed over the past five years?

The volume of Parent Loans for Undergraduate Students (PLUS loans) has increased substantially from FY03 to FY07 for both students with and without financial need. In FY03 nearly 2,300 parents borrowed on average \$6,869 to meet their child's education expenses. Five years later, nearly 3,400 parents borrowed approximately \$8,939 to cover these expenses. System-wide, the University awarded nearly \$30.5 million in PLUS loans in FY07 vs. \$15.5 million in FY03, an increase of nearly 100% (Table 1.4).

E. What percent of educational and required fees is met by grant aid?

Lower income students have the most financial need and on average receive much more grant aid than higher income students. In FY03, grant aid covered nearly 91% of educational and required fees for students with income less than \$20,000 and 87% for



	FY03	FY04	FY05	FY06	FY07	5-yr # Change	5-yr % Change
Completed FAFSA, did not have a need	4,054	4,025	4,204	4,725	4,682	628	15.5%
Grant aid, no FAFSA	<u>3,593</u>	<u>3,615</u>	<u>4,146</u>	<u>4,186</u>	<u>4,120</u>	<u>527</u>	14.7%
Aid recipients with no need	7,647	7,640	8,350	8,911	8,802	1,155	15.1%
Aid recipients with need*	13,030	14,257	14,736	14,895	15,029	1,999	15.3%
Full pay / No aid	<u>6,124</u>	<u>5,990</u>	<u>5,366</u>	<u>5,404</u>	<u>5,629</u>	<u>-495</u>	-8.1%
Total of all full- time, Degree-Seeking MO UG	<u>26,801</u>	<u>27,887</u>	<u>28,452</u>	<u>29,210</u>	<u>29,460</u>	<u>2,659</u>	9.9%

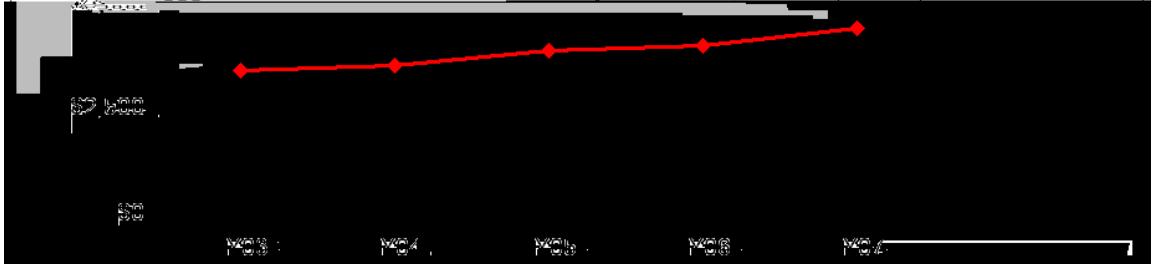
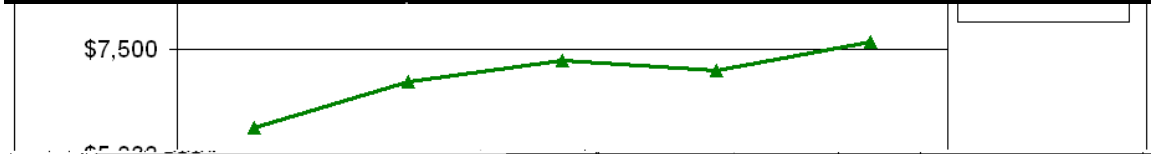
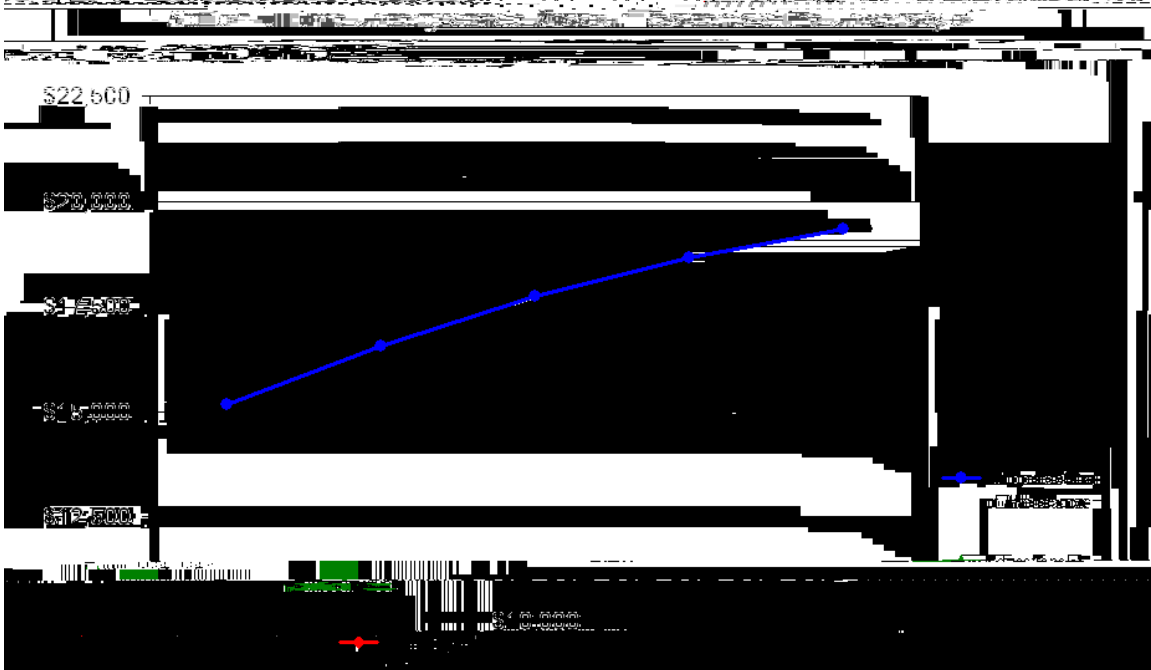
* All aid recipients with need completed a FAFSA and were not expected to pay the entire cost of attendance.

Note: Undergraduate Pharmacy and Medical students have been removed from this analysis.

Source: UIDS and EMSAS
IR&P/LCB 07/08

Figure 1.2

Educational and Required Fees vs. 0-Month Cost of Attendance and Grant



	2003	2004	2005	2006	2007	2008	2009
Cost of Attendance	14,500	16,000	17,500	19,000	20,500	21,000	21,500
Required Fees	5,500	6,000	6,500	6,500	6,500	6,500	7,000
Grant	1,200	1,200	1,250	1,300	1,350	1,400	1,500

Table 1.1

Average Institutional Grant Awards Distributed to Resident, Full-time, Degree-Seeking Undergraduates at the University of Missouri System, FY03 - FY07

Students with Need	FY03		FY04		FY05		FY06		FY07	
	# of Awards	Average Award	# of Awards	Average Award	# of Awards	Average Award	# of Awards	Average Award	# of Awards	Average Award
Type of Award Need*	2,334	\$1,803	3,141	\$1,880	4,137	\$1,915	5,155	\$1,904	5,336	\$2,133
Merit	4,253	\$2,408	4,328	\$2,582	4,452	\$2,613	4,538	\$2,626	5,008	\$2,751
Other**	737	\$1,760	886	\$2,122	1,065	\$2,209	1,050	\$2,490	1,252	\$2,360
Total	7,324	\$2,150	8,355	\$2,269	9,654	\$2,269	10,743	\$2,267	11,596	\$2,425

Students without Need	FY03		FY04		FY05		FY06		FY07	
	# of Awards	Average Award	# of Awards	Average Award	# of Awards	Average Award	# of Awards	Average Award	# of Awards	Average Award
Type of Award Merit	3,879	\$2,499	3,892	\$2,635	3,920	\$2,602	3,958	\$2,655	4,259	\$2,735
Other**	785	\$1,794	971	\$2,135	1,023	\$2,348	1,085	\$2,692	1,186	\$2,611
Total	4,664	\$2,380	4,863	\$2,535	4,943	\$2,550	5,043	\$2,663	5,445	\$2,708

*Institutional grant aid awarded to students with need includes both need and merit-based aid.

**Includes athletic aid and tuition waivers.

Source: UIDS, PeopleSoft

IR&P/LCB 07/08

Table 1.2

Total Grant Aid as % of Educational & Required Fees and % Total Cost of Attendance by Income Level at the University of Missouri System, F.867,Y03607

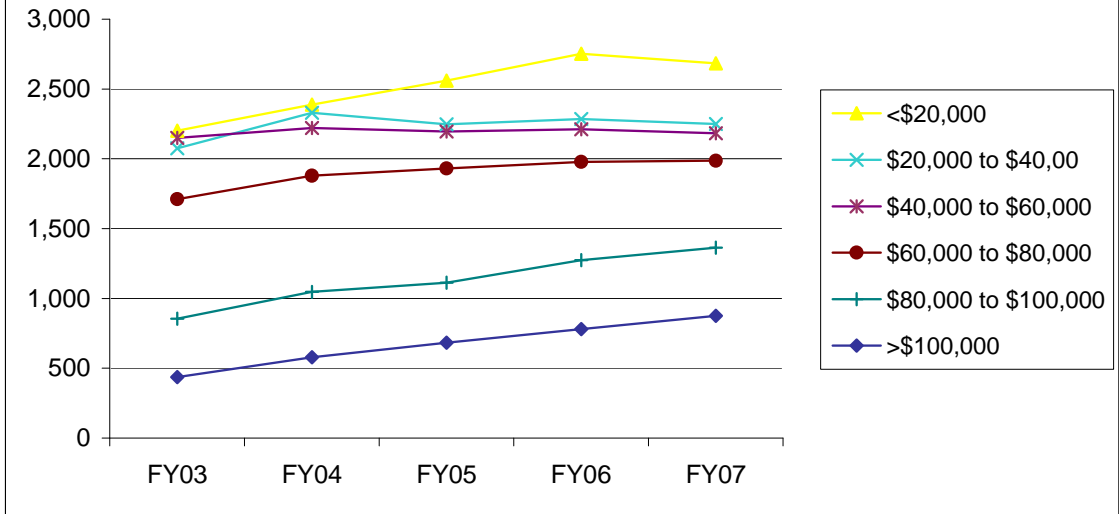
Income Level	FY03			FY07		
	Grant Aid	% Educational & Required Fees	% Total Cost of Attendance	Grant Aid	% Educational & Required Fees	% Total Cost of Attendance
<\$20,000	\$5,112	91%	31%	\$6,636	86%	32%
\$20,000 to \$40,00	\$4,914	87%	32%	\$6,563	85%	33%
\$40,000 to \$60,000	\$3,699	66%	25%	\$5,078	66%	26%
\$60,000 to \$80,000	\$2,874	51%	19%	\$3,887	51%	20%
\$80,000 to \$100,000	\$2,328	41%	15%	\$3,201	42%	17%
>\$100,000	\$1,967	35%	13%	\$2,847	37%	15%

Source: UIDS, Institutional Characteristics, PeopleSoft

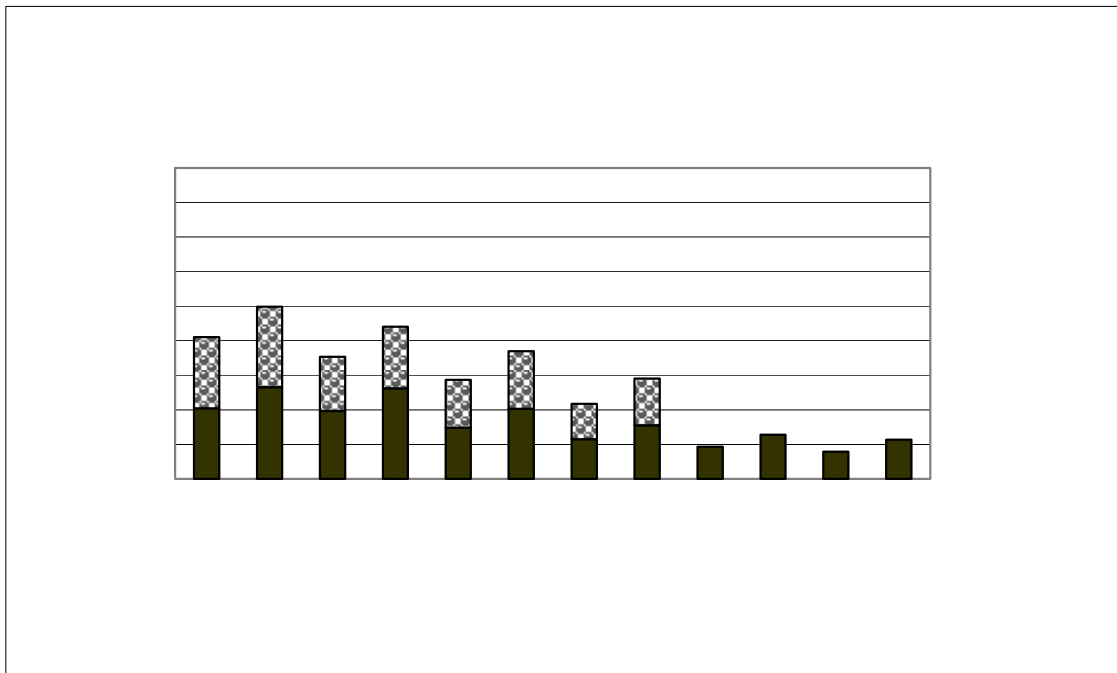
IR&P/LCB 07/08

Table 1.3

Figure 1.3
Number of Full-time, Degree-Seeking 9-Month Undergraduate Missouri Residents with Financial Need by Income Level at the University of Missouri System, FY03 - FY07

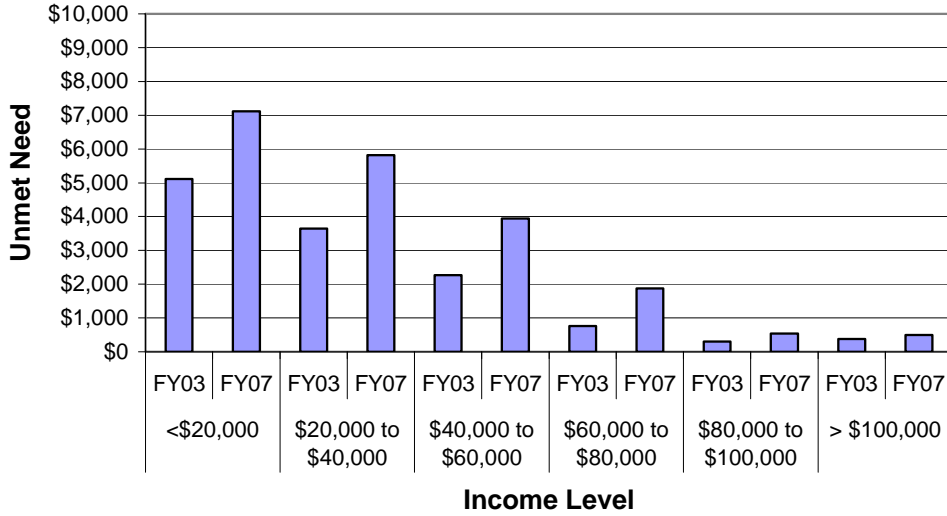


Source: UIDS, PeopleSoft
 IR&P/LCB 07/08



Source: UIDS, PeopleSoft
 IR&P/LCB 07/08

Figure 1.5
Average Amount of Unmet Financial Need by Income Level at
the University of Missouri System, FY03 vs. FY07



Source: UIDS, PeopleSoft
 IR&P/LCB 07/08

Table 1.5
Financial Aid Indicators for all FAFSA Filers that had a Need and Enrolled for 9 Months Only by Adjusted Gross Income,

University of Missouri System

Income Less than \$20,000

	FY03	FY04	FY05	FY06	FY07	FY03	FY04	FY05	FY06	FY07	# Change FY03-FY07	% Change FY03-FY07
Total Enrolled for 9 months (N)	2,202	2,388	2,560	2,752	2,684						482	22%
	Avg. Dollar Amount					Percent Cost of Attendance						
Cost of Attendance	\$16,456	\$17,797	\$18,970	\$19,963	\$20,543						\$4,087	25%
Less Expected Family Contribution*	<u>1,068</u>	<u>990</u>	<u>934</u>	<u>986</u>	<u>958</u>	6%	6%	5%	5%	5%	-110	-10%
Financial Need	15,388	16,806	18,036	18,976	19,585	94%	94%	95%	95%	95%	4,197	27%
Less Grant Aid	5,112	5,259	5,670	5,940	6,636	31%	30%	30%	30%	32%	1,524	30%
Unmet Need After Grant Aid	\$10,277	\$11,547	\$12,365	\$13,036	\$12,949	62%	65%	65%	65%	63%	2,673	26%
% Grant Aid that Met Financial Need	33%	31%	31%	31%	34%							
Non-Grant Sources to Meet Remaining Unmet Financial Need	Avg. Dollar Amount					Percent Cost of Attendance						
College Work Study	\$190	\$200	\$167	\$144	\$203	1%	1%	1%	1%	1%	12	6%
Need-based Loans	3,512	3,858	3,804	3,810	3,731	21%	22%	20%	19%	18%	219	6%
Alternative Loans	1,458	1,727	1,852	1,971	1,898	9%	10%	10%	10%	9%	439	30%
Unmet Need	\$5,115	\$5,762	\$6,542	\$7,111	\$7,118	31%	32%	34%	36%	35%	2,002	39%
*Amount Borrowed to meet EFC	\$532	\$568	\$521	\$515	\$529	3%	3%	3%	3%	3%	-3	-1%
	FY03	FY04	FY05	FY06	FY07	FY03	FY04	FY05	FY06	FY07	# Change FY03-FY07	% Change FY03-FY07
Total Enrolled for 9 months (N)	2,076	2,330	2,246	2,285	2,249						173	8%
	Avg. Dollar Amount					Percent Cost of Attendance						
Cost of Attendance	\$15,481	\$16,817	\$18,102	\$19,115	\$19,830						\$4,349	28%
Less Expected Family Contribution*	<u>2,993</u>	<u>2,967</u>	<u>2,983</u>	<u>3,258</u>	<u>3,001</u>	19%	18%	16%	17%	15%	8	0%
Financial Need	12,487	13,850	15,119	15,857	16,828	81%	82%	84%	83%	85%	4,341	35%
Less Grant Aid	4,914	5,014	5,506	5,759	6,563	32%	30%	30%	30%	33%	1,649	34%
Unmet Need After Grant Aid	\$7,573	\$8,836	\$9,612	\$10,099	\$10,265	49%	53%	53%	53%	52%	\$2,692	36%
% Grant Aid that Met Financial Need	39%	36%	36%	36%	39%							
Non-Grant Sources to Meet Remaining Unmet Financial Need	Avg. Dollar Amount					Percent Cost of Attendance						
College Work Study	252	225	210	189	218	2%	1%	1%	1%	1%	-34	-14%
Need-based Loans	3,154	3,503	3,527	3,581	3,460	20%	21%	19%	19%	17%	306	10%
Alternative Loans	520	649	580	720	769	3%	4%	3%	4%	4%	249	48%
Unmet Need	\$3,647	\$4,459	\$5,296	\$5,609	\$5,818	24%	27%	29%	29%	29%	2,171	60%
*Amount Borrowed to meet EFC	\$970	\$999	\$876	\$1,050	\$1,087	6%	6%	5%	5%	5%	118	12%
	FY03	FY04	FY05	FY06	FY07	FY03	FY04	FY05	FY06	FY07	# Change FY03-FY07	% Change FY03-FY07
Total Enrolled for 9 months (N)	2,150	2,220	2,196	2,221	2,183						33	2%
	Avg. Dollar Amount					Percent Cost of Attendance						
Cost of Attendance	\$14,960	\$16,262	\$17,488	\$18,383	\$19,178						4,219	28%
Less Expected Family Contribution*	<u>5,528</u>	<u>5,586</u>	<u>5,649</u>	<u>6,180</u>	<u>5,998</u>	37%	34%	32%	34%	31%	470	9%
Financial Need	9,432	10,676	11,840	12,203	13,180	63%	66%	68%	66%	69%	3,748	40%
Less Grant Aid	3,699	4,054	4,329	4,569	5,078	25%	25%	25%	25%	26%	1,379	37%
Unmet Need After Grant Aid	\$5,733	\$6,623	\$7,511	\$7,634	\$8,102	38%	41%	43%	42%	42%	2,370	41%
% Grant Aid that Met Financial Need	39%	38%	37%	37%	39%							
Non-Grant Sources to Meet Remaining Unmet Financial Need	Avg. Dollar Amount					Percent Cost of Attendance						
College Work Study	\$225	\$224	\$188	\$172	\$208	2%	1%	1%	1%	1%	-17	-8%
Need-based Loans	2,906	3,234	3,456	3,401	3,405	19%	20%	20%	19%	18%	499	17%
Alternative Loans	332	334	370	350	547	2%	2%	2%	2%	3%	214	64%
Unmet Need	\$2,269	\$2,830	\$3,496	\$3,710	\$3,943	15%	17%	20%	20%	21%	1,673	74%
*Amount Borrowed to meet EFC	\$1,606	\$1,588	\$1,218	\$1,357	\$1,664	11%	10%	7%	7%	9%	58	4%

Table 1.5 (Continued)

University of Missouri-System

Income Between \$60,000 to \$80,000

	FY03	FY04	FY05	FY06	FY07	FY03	FY04	FY05	FY06	FY07	# Change FY03-FY07	% Change FY03-FY07
Total Enrolled for 9 months (N)	1,712	1,879	1,930	1,978	1,986						274	16%
	Avg. Dollar Amount					Percent Cost of Attendance						
Cost of Attendance	\$14,854	\$16,235	\$17,409	\$18,295	\$19,097						\$4,243	29%
Less Expected Family Contribution*	8,656	9,078	9,320	10,172	9,951	58%	56%	54%	56%	52%	1,295	15%
Financial Need	6,198	7,157	8,089	8,123	9,146	42%	44%	46%	44%	48%	2,949	48%
Less Grant Aid	2,874	2,802	3,347	3,598	3,887	19%	17%	19%	20%	20%	1,014	35%
Unmet Need After Grant Aid	\$3,324	\$4,354	\$4,742	\$4,525	\$5,259	22%	27%	27%	25%	28%	1,935	58%
% Grant Aid that Met Financial Need	46%	39%	41%	44%	42%							
Non-Grant Sources to Meet												
Remaining Unmet Financial Need	Avg. Dollar Amount					Percent Cost of Attendance						
College Work Study	\$146	\$155	\$113	\$98	\$143	1%	1%	1%	1%	1%	-3	-2%
Need-based Loans	2,232	2,670	2,790	2,749	2,845	15%	16%	16%	15%	15%	613	27%
Alternative Loans	181	172	177	192	397	1%	1%	1%	1%	2%	215	119%
Unmet Need	\$765	\$1,357	\$1,663	\$1,486	\$1,874	5%	8%	10%	8%	10%	1,110	145%
*Amount Borrowed to meet EFC	\$2,627	\$2,943	\$1,812	\$2,179	\$2,638	18%	18%	10%	12%	14%	11	0%

Income Between \$80,000 to \$100,000

	FY03	FY04	FY05	FY06	FY07	FY03	FY04	FY05	FY06	FY07	# Change FY03-FY07	% Change FY03-FY07
Total Enrolled for 9 months (N)	854	1,047	1,113	1,275	1,364						510	60%
	Avg. Dollar Amount					Percent Cost of Attendance						
Cost of Attendance	\$15,066	\$16,430	\$17,712	\$18,712	\$19,124						\$4,058	27%
Less Expected Family Contribution*	10,277	10,733	11,630	12,400	12,747	68%	65%	66%	66%	67%	2,470	24%
Financial Need	4,789	5,698	6,082	6,311	6,377	32%	35%	34%	34%	33%	1,588	33%
Less Grant Aid	2,328	2,397	2,826	3,090	3,201	15%	15%	16%	17%	17%	873	37%
Unmet Need After Grant Aid	\$2,461	\$3,301	\$3,255	\$3,222	\$3,176	16%	20%	18%	17%	17%	715	29%
% Grant Aid that Met Financial Need	49%	42%	46%	49%	50%							
Non-Grant Sources to Meet												
Remaining Unmet Financial Need	Avg. Dollar Amount					Percent Cost of Attendance						
College Work Study	\$68	\$91	\$48	\$60	\$68	0%	1%	0%	0%	0%	1	1%
Need-based Loans	2,013	2,292	2,320	2,324	2,266	13%	14%	13%	12%	12%	253	13%
Alternative Loans	80	178	137	153	303	1%	1%	1%	1%	2%	223	280%
Unmet Need	\$301	\$740	\$750	\$685	\$539	2%	5%	4%	4%	3%	238	79%
*Amount Borrowed to meet EFC	\$3,342	\$3,344	\$2,451	\$2,725	\$3,342	22%	20%	14%	15%	17%	0	0%

Income > \$100,000

	FY03	FY04	FY05	FY06	FY07	FY03	FY04	FY05	FY06	FY07	# Change FY03-FY07	% Change FY03-FY07
Total Enrolled for 9 months (N)	436	580	682	779	875						439	101%
	Avg. Dollar Amount					Percent Cost of Attendance						
Cost of Attendance	\$15,455	\$16,486	\$17,844	\$18,668	\$19,394						\$3,939	25%
Less Expected Family Contribution*	11,153	11,758	12,961	13,467	13,690	72%	71%	73%	72%	71%	2,537	23%
Financial Need	4,302	4,728	4,883	5,201	5,704	28%	29%	27%	28%	29%	1,401	33%
Less Grant Aid	1,967	2,135	2,406	2,508	2,847	13%	13%	13%	13%	15%	881	45%
Unmet Need After Grant Aid	\$2,336	\$2,592	\$2,477	\$2,693	\$2,856	15%	16%	14%	14%	15%	521	22%
% Grant Aid that Met Financial Need	46%	45%	49%	48%	50%							
Non-Grant Sources to Meet												
Remaining Unmet Financial Need	Avg. Dollar Amount					Percent Cost of Attendance						
College Work Study	\$81	\$54	\$51	\$58	\$38	1%	0%	0%	0%	0%	-42	-53%
Need-based Loans	1,715	1,734	1,919	1,964	2,031	11%	11%	11%	11%	10%	316	18%
Alternative Loans	163	189	206	183	292	1%	1%	1%	1%	2%	129	79%
Unmet Need	\$377	\$616	\$300	\$488	\$495	2%	4%	2%	3%	3%	118	31%
*Amount Borrowed to meet EFC	\$3,914	\$3,937	\$2,495	\$3,099	\$3,181	25%	24%	14%	17%	16%	-733	-19%

Source: UIDS, PeopleSoft
IR&P/LCB 07/08

Section II

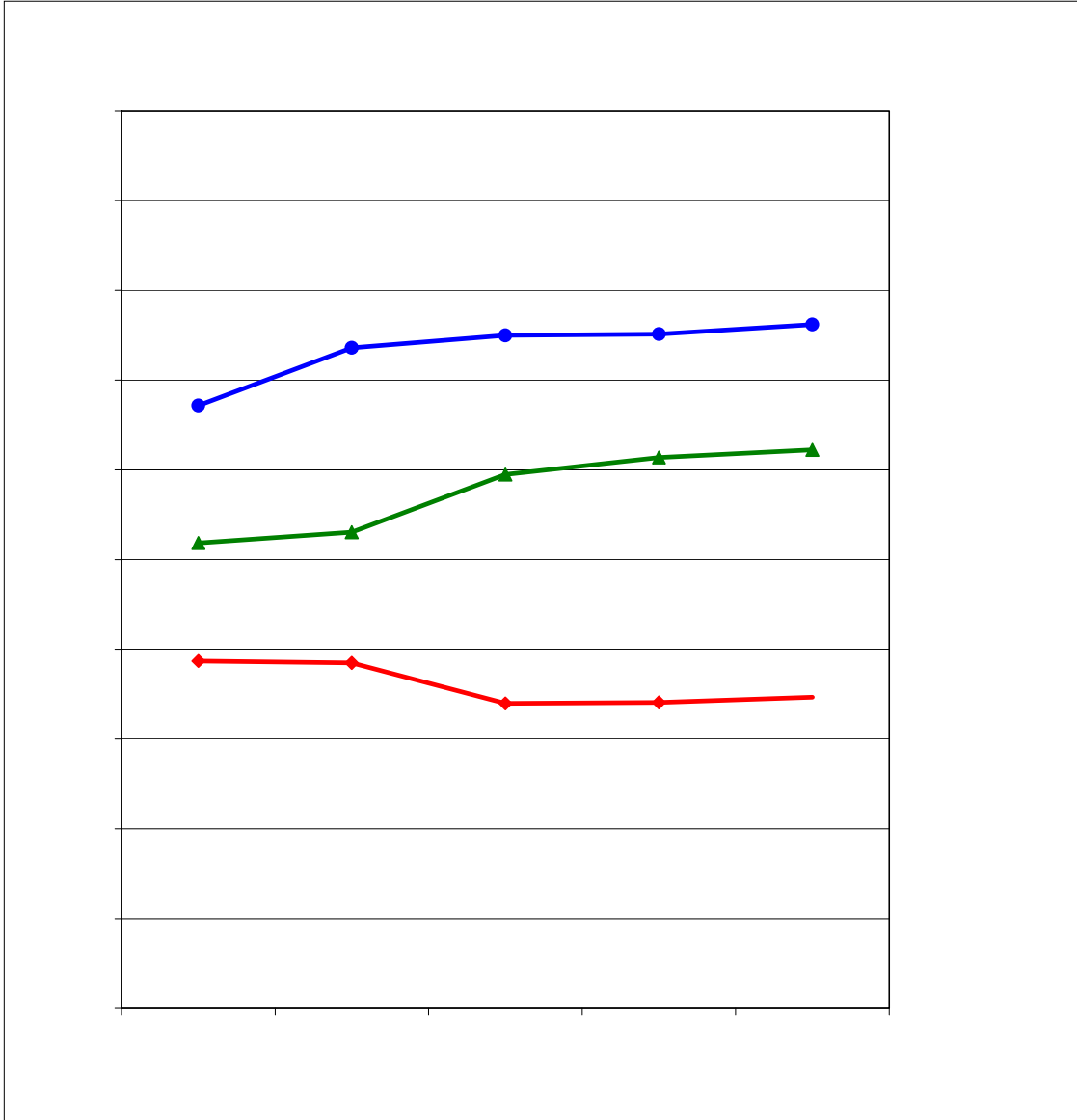
Campus-Level Financial Aid Trends of Full-Time, Degree-Seeking Missouri Undergraduates from FY03 to FY07

UM-Columbia (Table and Figure 2 series)

UM-Kansas City (Table and Figure 3 series)

Missouri S&T (Table and Figure 4 series)

UM-St. Louis (Table and Figure 5 series)



	FY03	FY04	FY05	FY06	FY07	5-yr # Change	5-yr % Change
Completed FAFSA, did not have a need	2,815	2,821	3,016	3,234	3,206	391	13.9%
Grant aid, no FAFSA	<u>2,370</u>	<u>2,484</u>	<u>2,932</u>	<u>2,903</u>	<u>3,017</u>	647	27.3%
Aid recipients with no need	5,185	5,305	5,948	6,137	6,223	1,038	20.0%
Aid recipients with need*	6,716	7,360	7,497	7,512	7,619	903	13.4%
Full pay / No aid	3,869	3,847	3,396	3,407	3,466	-403	-10.4%
Total of all full- time, Degree-Seeking MO UG	<u>15,770</u>	<u>16,512</u>	<u>16,841</u>	<u>17,056</u>	<u>17,308</u>	1,538	9.8%

* All aid recipients with need completed a FAFSA and were not expected to pay the entire cost of attendance.

Source: UIDS
IR&P/LCB 07/08

	FY03	FY04	FY05	FY06	FY07	5-yr # Change	5-yr % Change
Budgeted Cost of Attendance	\$14,149	\$15,557	\$16,699	\$17,594	\$18,532	\$4,383	31.0%
Educational & Required Fees	\$5,552	\$6,558	\$7,100	\$6,960	\$7,308	\$1,756	31.6%
Average Grant Aid	\$3,660	\$3,696	\$4,101	\$4,266	\$4,657	\$997	27.2%

Source: UIDS, IPEDS Institutional Characteristics
IR&P/LCB 07/08

Table 2.1

Students with Need

# of Awards	Average Award	# of Awards	Average Award	# of Awards
-------------	---------------	-------------	---------------	-------------

Table 2.3
Total Financial Aid as % of Cost of Attendance by Income Level at the University of Missouri-Columbia, FY03 & FY07

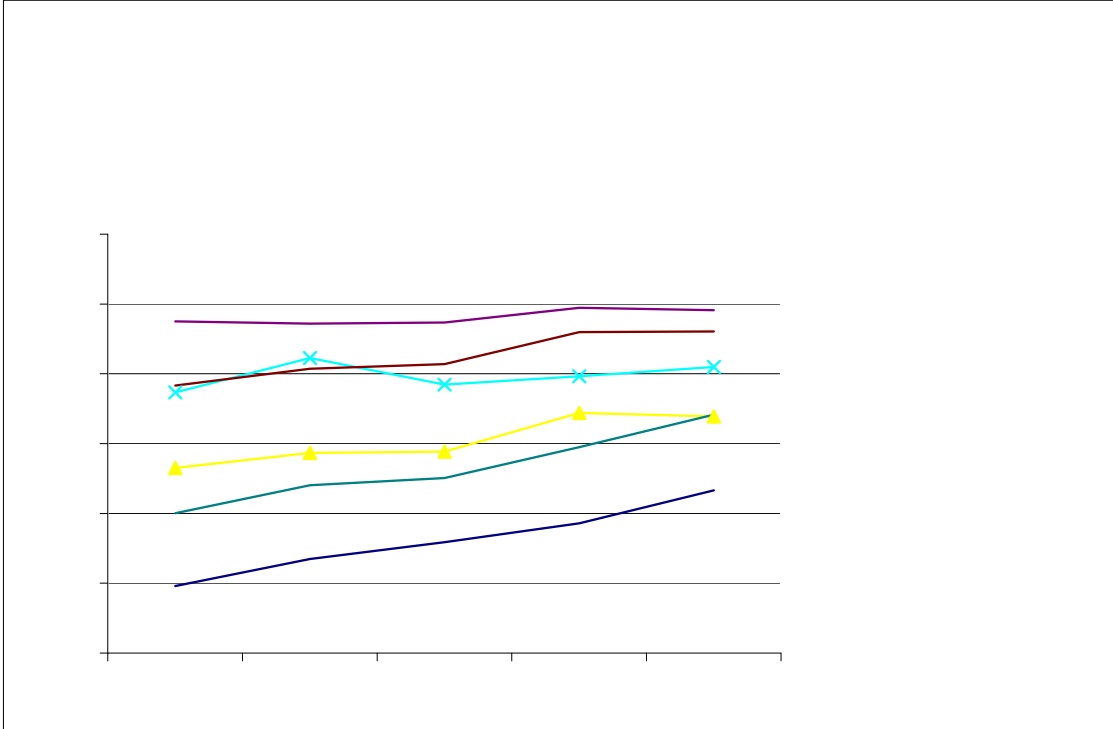
Income Level	FY03					FY07				
	% COA Met by Source of Aid				% Unmet COA	% COA Met by Source of Aid				% Unmet COA
	Expected Family Contribution	Gift Aid	Work Study	Loans		Expected Family Contribution	Gift Aid	Work Study	Loans	
<\$20,000	8%	44%	2%	29%	17%	5%	47%	1%	27%	20%
\$20,000 to \$40,00	18%	44%	2%	23%	13%	16%	43%	1%	21%	19%
\$40,000 to \$60,000	38%	31%	2%	21%	8%	32%	33%	1%	20%	14%
\$60,000 to \$80,000	60%	23%	1%	15%	1%	53%	24%	1%	16%	6%
\$80,000 to \$100,000	70%	18%	1%	13%	0%	67%	18%	0%	13%	2%
>\$100,000	78%	13%	1%	9%	0%	72%	15%	0%	12%	1%

Source: UIDS
 IR&P/LCB 07/08

Table 2.4
Average PLUS Loan Awarded to PLUS Loan Recipients, Resident, Full-time,

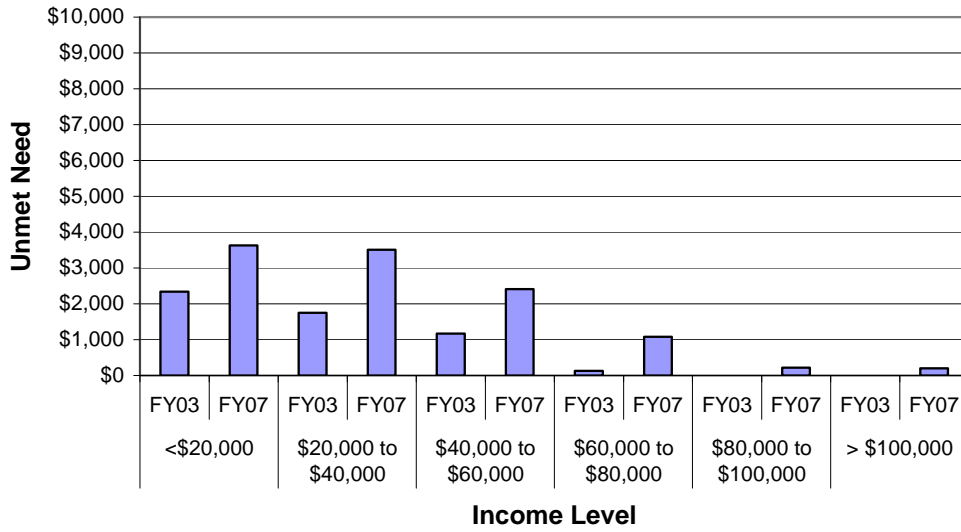
	N	FY03		FY04		FY05		FY06		FY07
		Mean	N	Mean	N	Mean	N	Mean	N	Mean
With Need	1,263	\$6,341	1,231	\$6,925	1,655	\$7,590	1,779	\$8,119	1,717	\$8,571
Without Need	781	8,154	771	8,598	932	9,456	1,081	9,715	996	10,219
Total	2,044	\$7,034	2,002	\$7,569	2,587	\$8,262	2,860	\$8,722	2,713	\$9,176

Source: UIDS
 IR&P/LCB 07/08



Source: UIDS
IR&P/LCB 07/08

Figure 2.5
Average Amount of Unmet Financial Need by Income Level at the
UM-Columbia, FY03 vs. FY07



Source: UIDS
 IR&P/LCB 07/08

Table 2.5

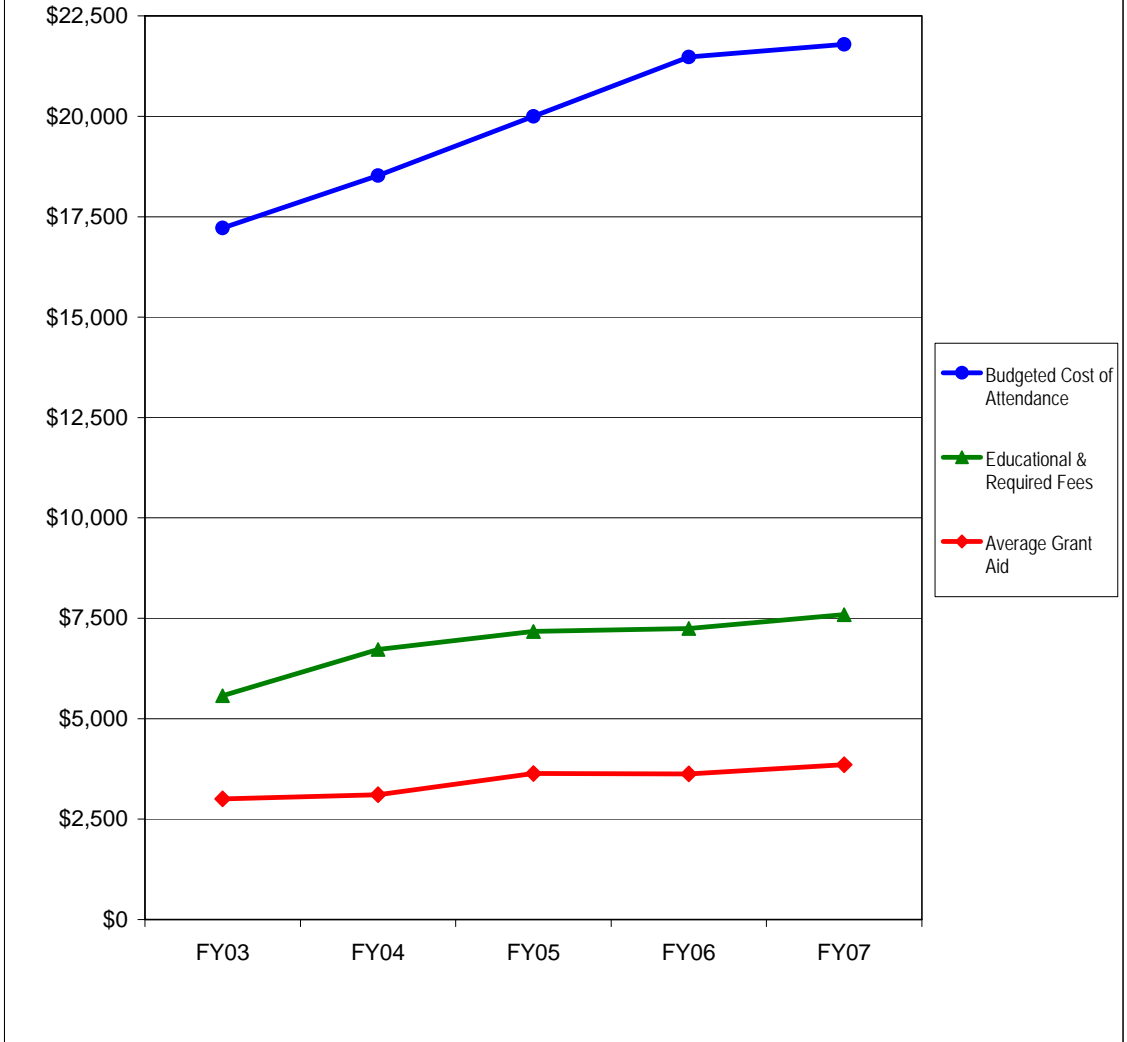
	FY03	FY04	FY05	FY06	FY07	FY03	FY04	FY05	FY06	FY07	# Change FY03-FY07	% Change FY03-FY07
Total Enrolled for 9 months (N)	663	717	721	860	847						184	28%
Cost of Attendance	\$14,074	\$15,527	\$16,662	\$17,586	\$18,541						\$4,467	32%
Less Expected Family Contribution*	<u>1,120</u>	<u>919</u>	<u>971</u>	<u>919</u>	<u>956</u>	8%	6%	6%	5%	5%	-164	-15%
Financial Need	12,954	14,608	15,691	16,667	17,585	92%	94%	94%	95%	95%	4,631	36%
Less Grant Aid	6,246	6,428	7,314	7,645	8,763	44%	41%	44%	43%	47%	2,517	40%
Unmet Need After Grant Aid	\$6,708	\$8,180	\$8,377	\$9,022	\$8,822	48%	53%	50%	51%	48%	2,114	32%
% Grant Aid that Met Financial Need	48%	44%	47%	46%	50%							
Non-Grant Sources to Meet Remaining Unmet Financial Need												
College Work Study	\$252	\$284	\$176	\$159	\$181	2%	2%	1%	1%	1%	-71	-28%
Need-based Loans	3,090	3,715	3,701	3,634	3,581	22%	24%	22%	21%	19%	491	16%
Alternative Loans	1,024	1,249	1,147	1,370	1,427	7%	8%	7%	8%	8%	403	39%
Unmet Need	\$2,342	\$2,932	\$3,353	\$3,859	\$3,633	17%	19%	20%	22%	20%	1,291	55%
*Amount Borrowed to meet EFC	\$308	\$370	\$293	\$240	\$264	2%	2%	2%	1%	1%	-44	-14%

#

FY03 FY04 FY05 FY06 FY07 FY03 FY04 FY05 FY06 FY07

	FY03	FY04	FY05	FY06	FY07	5-yr # Change	5-yr % Change
Completed FAFSA, did not have a need	273	294	302	355	332	59	21.6%
Grant aid, no FAFSA	<u>303</u>	<u>290</u>	<u>329</u>	<u>367</u>	<u>318</u>	<u>15</u>	5.0%

Figure 3.2
Educational and Required Fees vs. 9-Month Cost of Attendance and Grant Aid
for Full-time Undergraduate Missouri Residents at the University of Missouri-
Kansas City, FY03 - FY07



	FY03	FY04	FY05	FY06	FY07	5-yr # Change	5-yr % Change
Budgeted Cost of Attendance	\$17,219	\$18,525	\$20,001	\$21,480	\$21,795	\$4,576	26.6%
Educational & Required Fees	\$5,573	\$6,725	\$7,175	\$7,250	\$7,592	\$2,019	36.2%
Average Grant Aid	\$3,002	\$3,108	\$3,635	\$3,624	\$3,855	\$853	28.4%

Note: Undergraduate Pharmacy and Medical students have been removed from this analysis.
 Source: UIDS, IPEDS Institutional Characteristics
 IR&P/LCB 07/08

Table 3.1

Students with Need										
	# of Awards	Average Award	# of Awards	Average Award	# of Awards	Average Award	# of Awards	Average Award	# of Awards	Average Award
Type of Award Need*	273	\$1,698	340	\$1,819	560	\$1,174	541	\$1,624	495	\$1,561
Merit	514	\$2,289	547	\$2,479	761	\$2,633	846	\$2,839	835	\$3,045
Other**	32	\$1,333	39	\$1,344	139	\$852	162	\$1,789	128	\$1,887
Total	819	\$2,055	926	\$2,189	1,460	\$1,904	1,549	\$2,305	1,458	\$2,440
Students without Need										
	# of Awards	Average Award	# of Awards	Average Award	# of Awards	Average Award	# of Awards	Average Award	# of Awards	Average Award
Type of Award Merit	347	\$2,385	326	\$2,691	385	\$2,685	449	\$3,159	419	\$3,224
Other**	38	\$1,659	30	\$1,577	51	\$1,209	69	\$1,401	61	\$1,694
Total	385	\$2,313	356	\$2,597	436	\$2,512	518	\$2,925	480	\$3,030

Table 3.3**Total Financial Aid as % of Cost of Attendance by Income Level at the University of Missouri-Kansas City, FY03 & FY07**

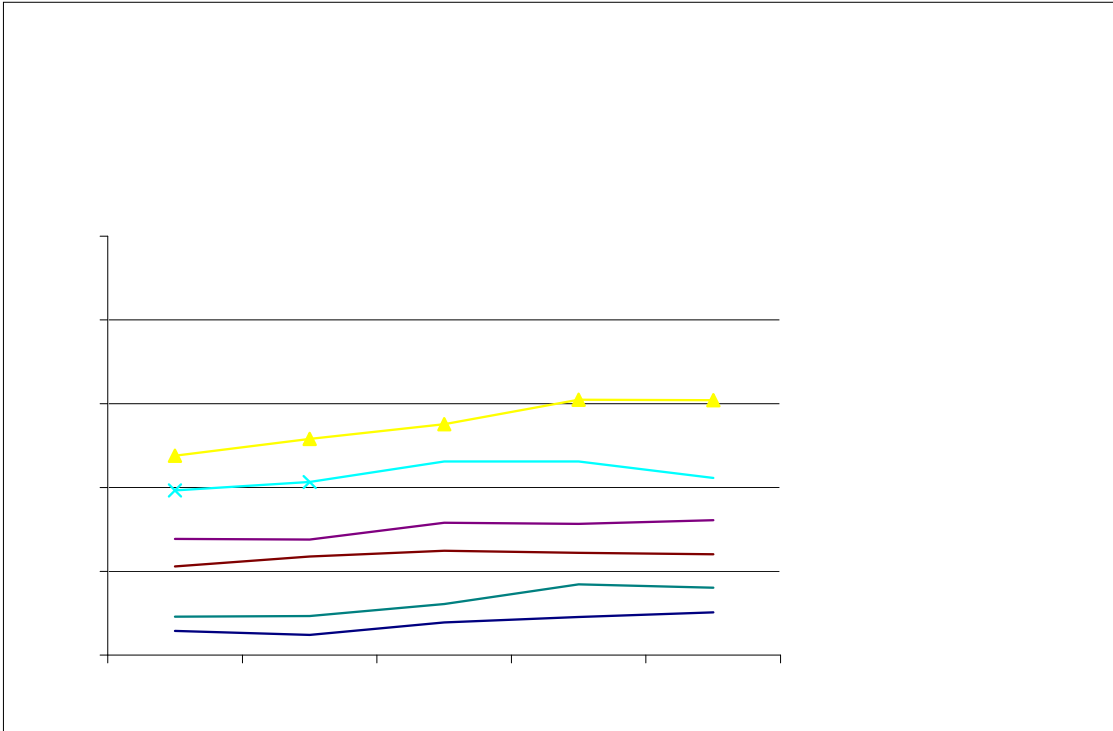
Income Level	FY03					FY07				
	% COA Met by Source of Aid				% Unmet COA	% COA Met by Source of Aid				% Unmet COA
	Expected					Expected				
	Family Contribution	Gift Aid	Work Study	Loans	Family Contribution	Gift Aid	Work Study	Loans		
<\$20,000	6%	27%	1%	31%	35%	4%	25%	1%	26%	44%
\$20,000 to \$40,00	22%	21%	2%	23%	31%	14%	25%	2%	19%	40%
\$40,000 to \$60,000	36%	19%	2%	20%	23%	29%	19%	2%	17%	33%
\$60,000 to \$80,000	55%	17%	2%	16%	10%	50%	14%	2%	15%	19%
\$80,000 to \$100,000	66%	13%	0%	12%	9%	65%	13%	0%	12%	10%
>\$100,000	68%	11%	2%	13%	6%	71%	14%	0%	10%	5%

Source: UIDS
IR&P/LCB 07/08

Table 3.4**Average PLUS Loan Awarded to PLUS Loan Recipients, Resident, Full-time, Degree-Seeking Undergraduates by Financial Need at the University of Missouri-Kansas City, FY03 - FY07**

	FY03		FY04		FY05		FY06		FY07	
	N	Mean	N	Mean	N	Mean	N	Mean	N	Mean
With Need	26	\$5,236	43	\$4,483	104	\$4,073	108	\$5,296	119	\$6,605
Without Need	13	4,964	17	6,442	38	4,155	55	4,384	35	6,778
	39	\$5,145	60	\$5,038	142	\$4,095	163	\$4,988	154	\$6,644

Source: UIDS
IR&P/LCB 07/08

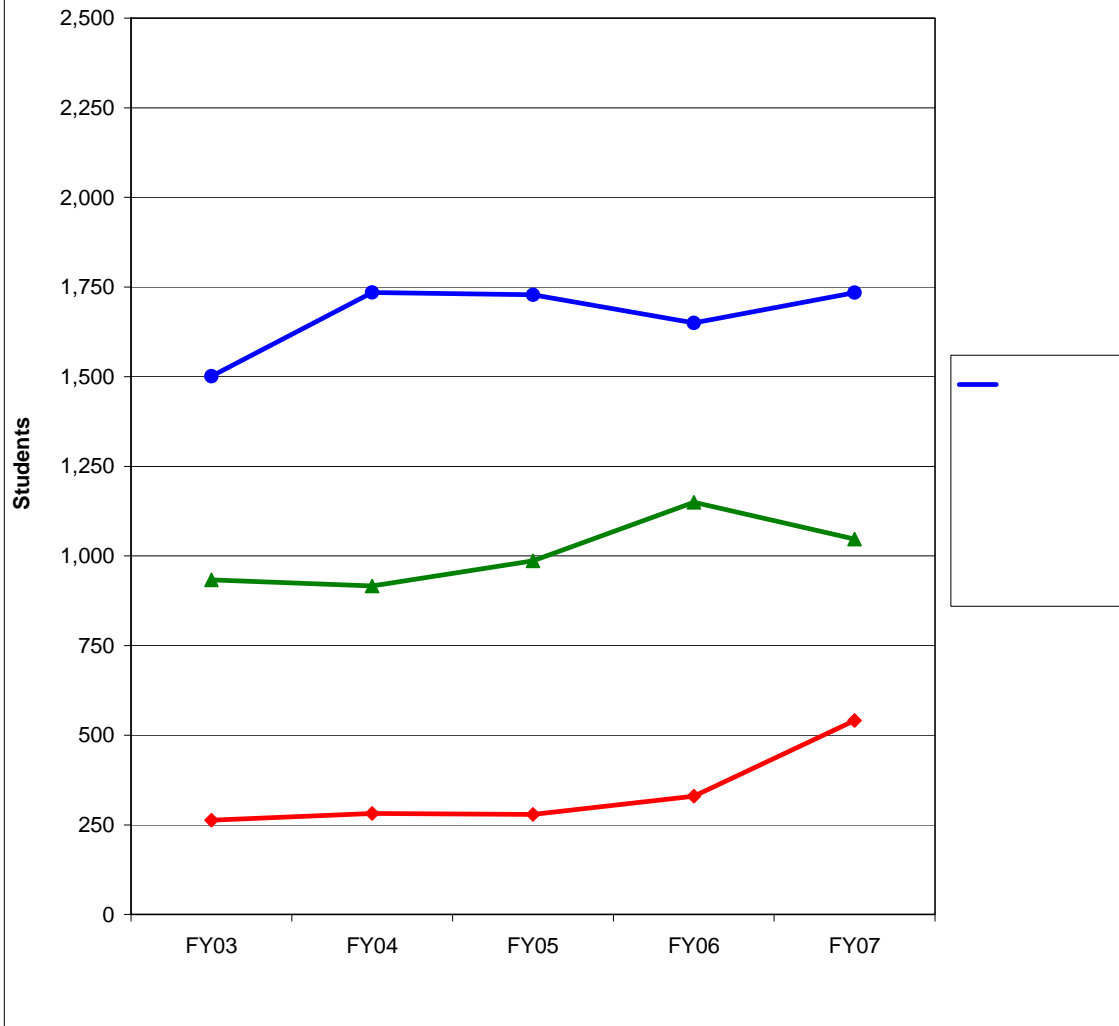


Source: UIDS
IR&P/LCB 07/08

Source: UIDS
IR&P/LCB 07/08

Table 3.5 (Continued)

**Figure 4.1
Financial Aid Status for Full-time, Degree-Seeking Missouri Undergraduates at
Missouri S&T, FY03 - FY07**



	FY03	FY04	FY05	FY06	FY07	5-yr # Change	5-yr % Change
Completed FAFSA, did not have a need	436	440	453	611	668	232	53.2%
Grant aid, no FAFSA	<u>497</u>	<u>476</u>	<u>533</u>	<u>539</u>	<u>379</u>	-118	-23.7%
Aid recipients with no need	933	916	986	1,150	1,047	114	12.2%
Aid recipients with need*	1,501	1,735	1,728	1,650	1,734	233	15.5%
Full pay / No aid	263	282	279	330	541	278	105.7%
Total of all full- time, Degree-Seeking MO UG	2,697	2,933	2,993	3,130	3,322	625	23.2%

* All aid recipients with need completed a FAFSA and were not expected to pay the entire cost of attendance.

Source: UIDS and EMSAS
IR&P/LCB 07/08

	FY03	FY04	FY05	FY06	FY07	5-yr # Change	5-yr % Change
Budgeted Cost of Attendance	\$14,106	\$15,482	\$16,268	\$16,810	\$17,227	\$3,121	22.1%
Educational & Required Fees	\$5,649	\$6,839	\$7,308	\$7,536	\$7,889	\$2,240	39.7%

Table 4.1

Students with Need				FY05		FY06		FY07	
		# of Awards	Average Award	# of Awards	Average Award	# of Awards	Average Award	# of Awards	Average Award
Type of Award	Need*	0	\$0	0	\$0	0	\$0	1,247	\$233
	Merit	772	\$2,812	855	\$3,006	809	\$2,952	596	\$2,915
	Other**	56	\$2,271	57	\$3,098	50	\$3,216	45	\$3,747
	Total	828	\$2,775	912	\$3,012	859	\$2,967	641	\$2,973
Students without Need				FY05					
		# of Awards	Average Award	# of Awards	Average Award	# of Awards	Average Award	# of Awards	Average Award
Type of Award	Merit	710	\$3,073	673	\$3,402	695	\$3,317	541	\$3,583
	Other**	61	\$2,797	64	\$2,343	58	\$2,660	44	\$2,626
	Total	771	\$3,051	737	\$3,310	753	\$3,266	585	\$3,511

*Institutional grant aid awarded to students with need includes both need and merit-based aid.

**Includes athletic aid and tuition waivers.

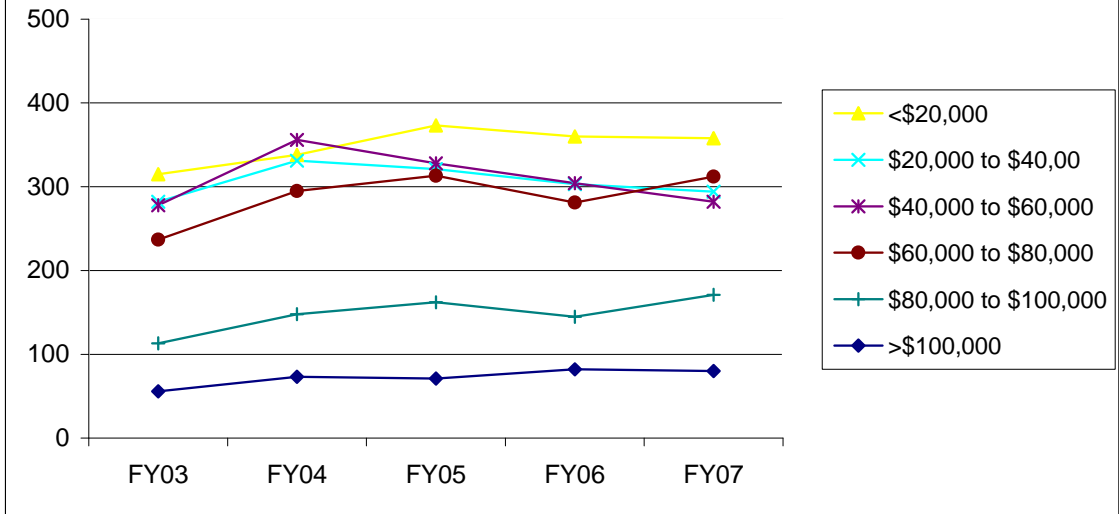
Source: UIDS, PeopleSoft

IR&P/LCB 07/08

Table 4.3

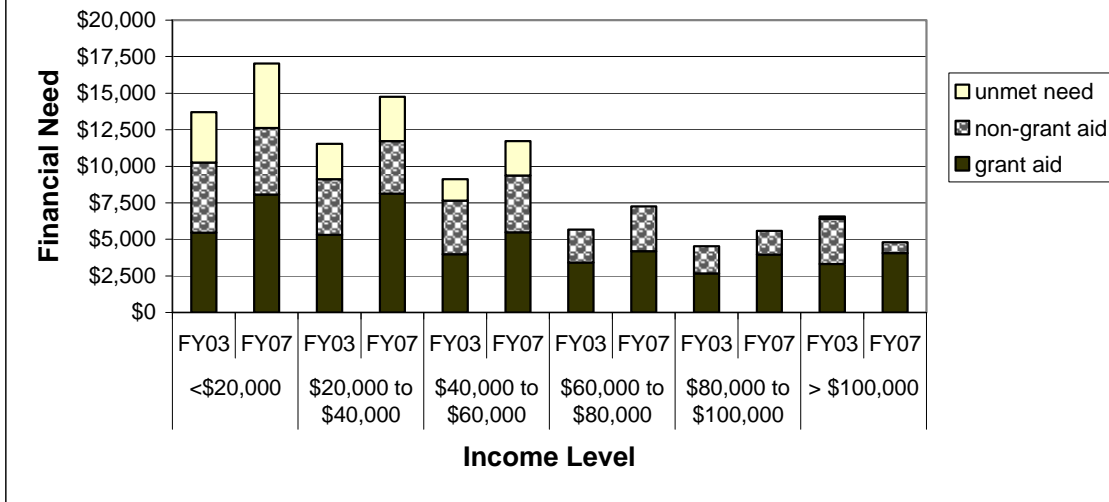
Income Level	Expected Family Contribution	Gift Aid	Work Study	Loans	% Unmet COA	Expected Family Contribution	Gift Aid	Work Study	Loans	% Unmet COA
<\$20,000	6%	37%	1%	32%	24%	4%	46%	2%	24%	24%
\$20,000 to \$40,00	18%	38%	1%	26%	17%	14%	47%	1%	20%	18%

Figure 4.3
Number of Full-time, Degree-Seeking 9-Month Undergraduate Missouri Residents with Financial Need by Income Level at Missouri S&T, FY03 - FY07



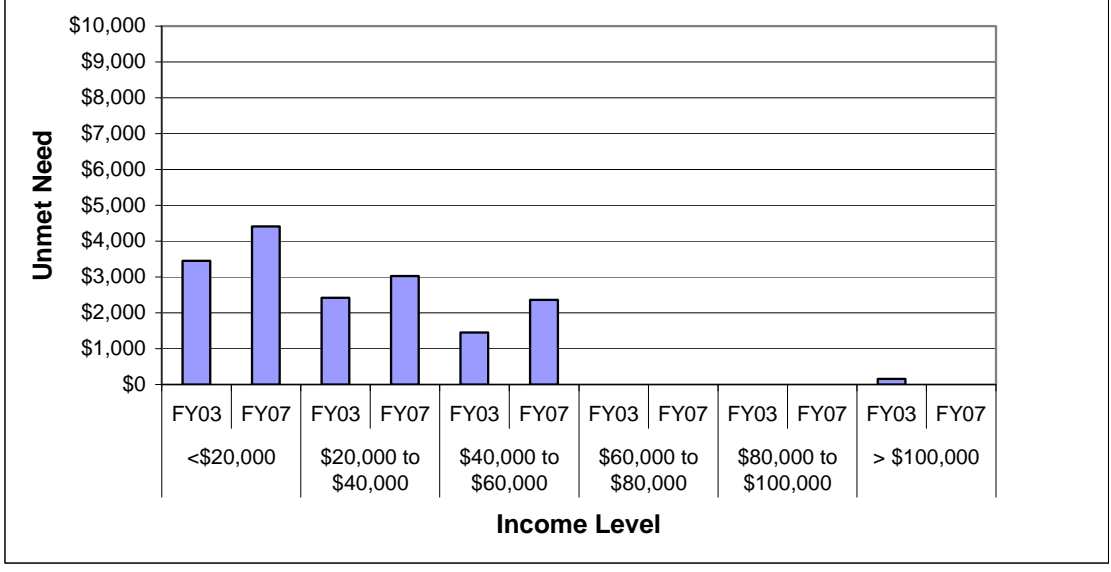
Source: UIDS, PeopleSoft
 IR&P/LCB 07/08

Figure 4.4
Distribution of Grant Aid, Non-Grant Aid, and Unmet Need by Income Level at Missouri S&T, FY03 vs. FY07



Source: UIDS, PeopleSoft
 IR&P/LCB 07/08

Figure 4.5
Average Amount of Unmet Financial Need by Income Level at
Missouri S&T, FY03 vs. FY07



Source: UIDS, PeopleSoft
 IR&P/LCB 07/08

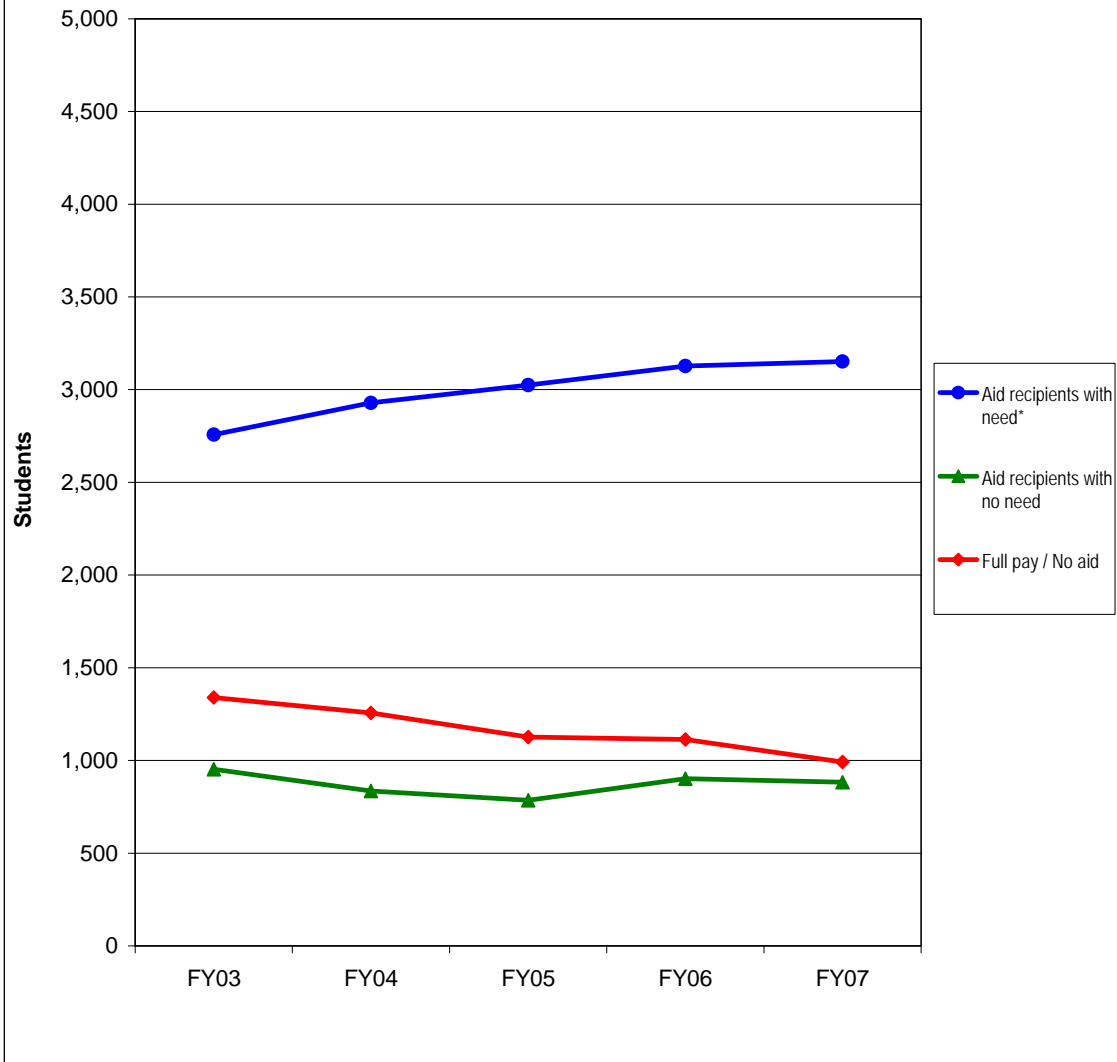
Table 4.5

	FY03	FY04	FY05	FY06	FY07	FY03	FY04	FY05	FY06	FY07	# Change FY03-FY07	% Change FY03-FY07
Total Enrolled for 9 months (N)	315	338	373	360	358						43	14%
Cost of Attendance	\$14,584	\$15,756	\$16,476	\$17,172	\$17,652						\$3,068	21%
Less Expected Family Contribution*	<u>875</u>	<u>782</u>	<u>801</u>	<u>809</u>	<u>626</u>	6%	5%	5%	5%	4%	-249	-28%
Financial Need	13,709	14,974	15,675	16,363	17,026	94%	95%	95%	95%	96%	3,317	24%
Less Grant Aid	5,467	6,048	6,211	6,566	8,064	37%	38%	38%	38%	46%	2,597	48%
Unmet Need After Grant Aid	\$8,242	\$8,926	\$9,464	\$9,797	\$8,962	57%	57%	57%	57%	51%	720	9%

Table 4.5 (Continued)

	FY03	FY04	FY05	FY06	FY07	FY03	FY04	FY05	FY06	FY07	# Change FY03-FY07	% Change FY03-FY07
Total Enrolled for 9 months (N)	237	295	313	281	312						75	32%

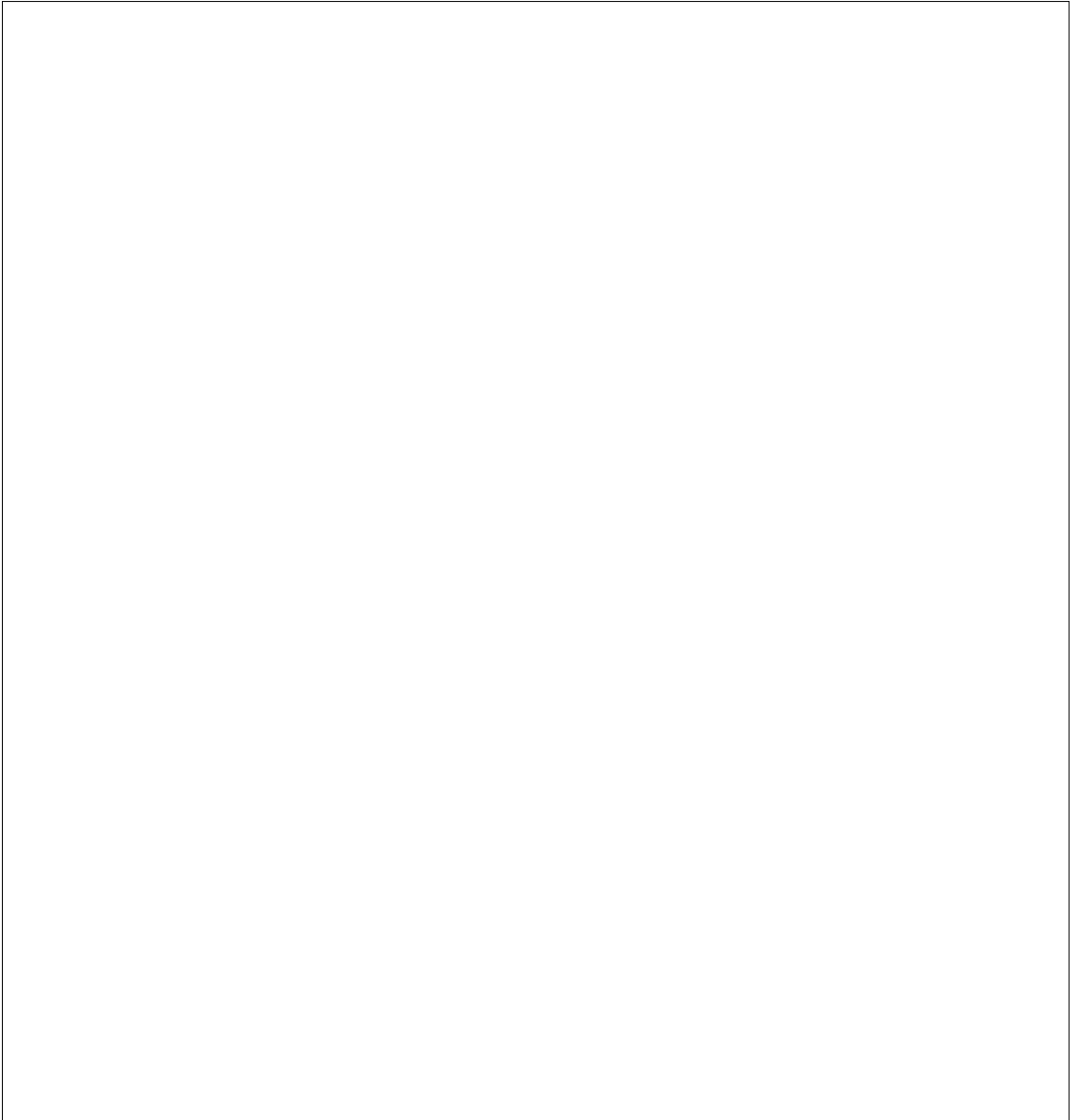
Figure 5.1
Financial Aid Status for Full-time, Degree-Seeking Missouri Undergraduates at
the University of Missouri-St. Louis, FY03 - FY07



	FY03	FY04	FY05	FY06	FY07	5-yr # Change	5-yr % Change
Completed FAFSA, did not have a need	530	470	433	525	476	-54	-10.2%
Grant aid, no FAFSA	<u>423</u>	<u>365</u>	<u>352</u>	<u>377</u>	<u>406</u>	-17	-4.0%
Aid recipients with no need	953	835	785	902	882	-71	-7.5%
Aid recipients with need*	2,757	2,928	3,025	3,127	3,152	395	14.3%
Full pay / No aid	1,340	1,256	1,126	1,113	991	-349	-26.0%
Total of all full-time, Degree-Seeking MO UG	5,050	5,019	4,936	5,142	5,025	-25	-0.5%

* All aid recipients with need completed a FAFSA and were not expected to pay the entire cost of attendance.

Source: UIDS
 IR&P/LCB 07/08



	FY03	FY04	FY05	FY06	FY07	5-yr # Change	5-yr % Change
Budgeted Cost of Attendance	\$16,918	\$18,375	\$19,773	\$20,662	\$21,524	\$4,606	27.2%
Educational & Required Fees	\$5,813	\$6,866	\$7,378	\$6,253	\$7,968	\$2,155	37.1%
Average Grant Aid	\$2,437	\$2,595	\$2,686	\$2,806	\$3,098	\$661	27.1%

Source: UIDS, IPEDS Institutional Characteristics
IR&P/LCB 07/08

Table 5.1

Average Institutional Grant Awards Distributed to Resident, Full-time, Degree-Seeking Undergraduates at the University of Missouri-St. Louis, FY03 - FY07

Students with Need	FY03		FY04		FY05		FY06		FY07	
	# of Awards	Average Award	# of Awards	Average Award	# of Awards	Average Award	# of Awards	Average Award	# of Awards	Average Award
	Type of Award									
Need*	42	\$1,951	606	\$506	99	\$1,567	586	\$1,107	219	\$3,206
Merit	514	\$2,057	539	\$2,201	551	\$1,986	615	\$2,088	703	\$2,479
Other**	67	\$1,888	59	\$2,348	75	\$2,852	101	\$2,690	302	\$1,350
Total	623	\$2,032	1,204	\$1,355	725	\$2,018	1,302	\$1,693	1,224	\$2,331

Students without Need	FY03		FY04		FY05		FY06		FY07	
	# of Awards	Average Award	# of Awards	Average Award	# of Awards	Average Award	# of Awards	Average Award	# of Awards	Average Award
	Type of Award									
Merit	369	\$2,301	285	\$2,307	245	\$2,110	302	\$2,203	330	\$2,638
Other**	51	\$1,866	56	\$2,780	67	\$2,622	92	\$3,092	146	\$2,323
Total	420	\$2,248	341	\$2,385	312	\$2,220	394	\$2,411	476	\$2,541

*The amount and type of institutional need-based funding changes each year at UMSL.

**Includes athletic aid and tuition waivers.

Source: UIDS

IR&P/LCB 07/08

Table 5.2

Total Grant Aid as % of Educational & Required Fees and % Total Cost of Attendance by Income Level at the University of Missouri-St. Louis, FY03 & FY07

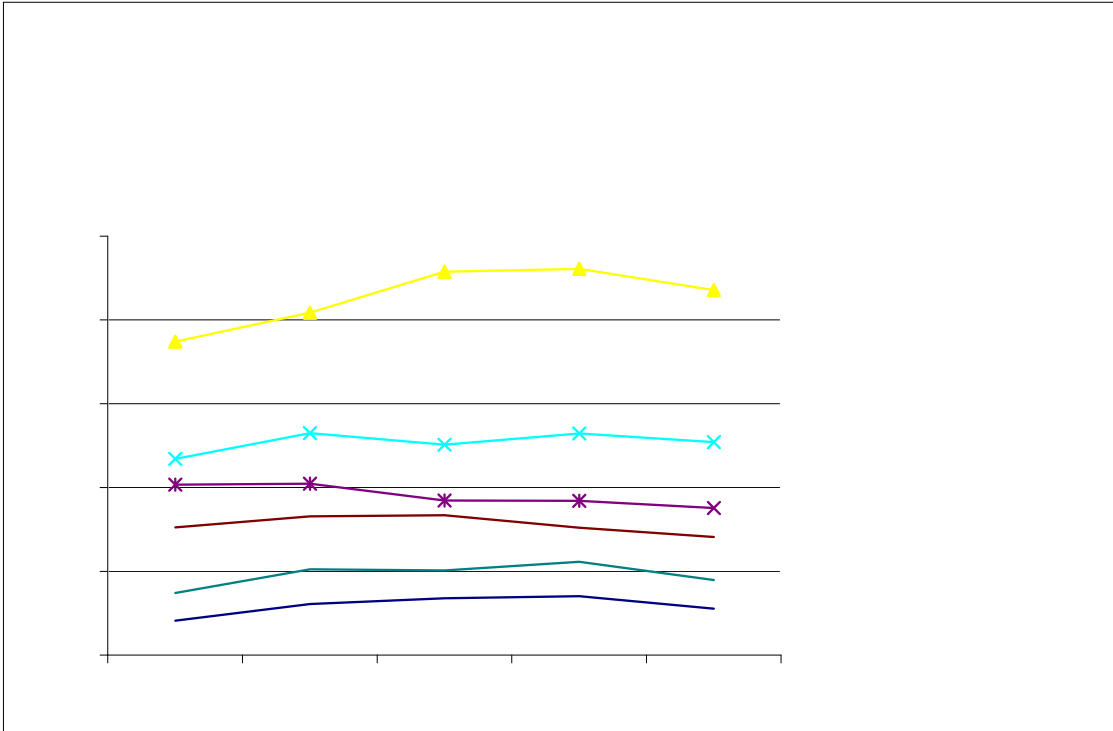
Income Level	FY03			FY07		
	Grant Aid	% Educational & Required Fees	% Total Cost of Attendance	Grant Aid	% Educational & Required Fees	% Total Cost of Attendance
		<\$20,000	\$4,094		70%	22%
\$20,000 to \$40,00	\$3,053	53%	18%	\$3,740	47%	17%
\$40,000 to \$60,000	\$1,905	33%	11%	\$2,397	30%	11%
\$60,000 to \$80,000	\$1,432	25%	9%	\$2,081	26%	10%
\$80,000 to \$100,000	\$1,373	24%	8%	\$1,558	20%	8%
>\$100,000	\$1,299	22%	7%	\$1,472	18%	7%

Source: UIDS

IR&P/LCB 07/08

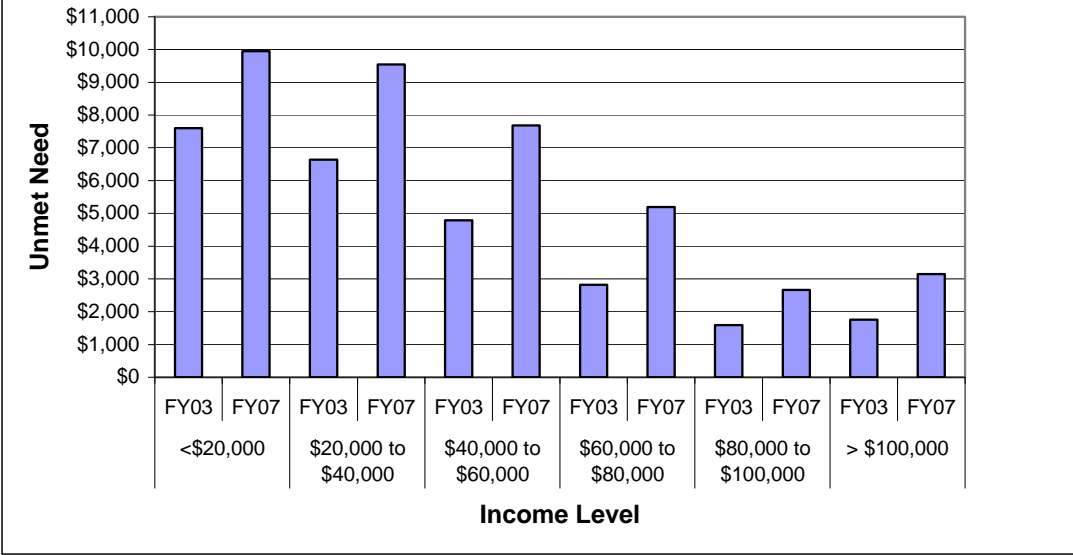
Table 5.3

Income Level **Expected**



Source: UIDS
IR&P/LCB 07/08

Figure 5.5
Average Amount of Unmet Financial Need by Income Level at the
UM-St. Louis, FY03 vs. FY07



Source: UIDS
 IR&P/LCB 07/08

Table 5.5

	FY03	FY04	FY05	FY06	FY07	FY03	FY04	FY05	FY06	FY07	# Change FY03-FY07	% Change FY03-FY07
Total Enrolled for 9 months (N)	748	817	915	922	871						123	16%
Cost of Attendance	\$18,489	\$19,774	\$20,691	\$21,851	\$22,407						\$3,918	21%

Table 5.5 (Continued)

University of Missouri-St. Louis

Income Between \$60,000 to \$80,000

	FY03	FY04	FY05	FY06	FY07	FY03	FY04	FY05	FY06	FY07	# Change FY03-FY07	% Change FY03-FY07
Total Enrolled for 9 months (N)	305	331	334	304	282						-23	-8%
	Avg. Dollar Amount					Percent Cost of Attendance						
Cost of Attendance	\$16,213	\$17,438	\$18,840	\$19,966	\$21,028						\$4,815	30%
Less Expected Family Contribution*	8,614	8,919	9,372	10,507	9,739	53%	51%	50%	53%	46%	1,125	13%
Financial Need	7,599	8,519	9,468	9,459	11,289	47%	49%	50%	47%	54%	3,690	49%
Less Grant Aid	1,432	1,560	1,563	1,477	2,081	9%	9%	8%	7%	10%	649	45%
Unmet Need After Grant Aid	\$6,167	\$6,959	\$7,905	\$7,982	\$9,208	38%	40%	42%	40%	44%	3,041	49%
% Grant Aid that Met Financial Need	19%	18%	17%	16%	18%							
Non-Grant Sources to Meet Remaining Unmet Financial Need	Avg. Dollar Amount					Percent Cost of Attendance						
College Work Study	\$65	\$0	\$0	\$0	\$23	0%	0%	0%	0%	0%	-42	-65%
Need-based Loans	3,124	3,267	3,208	3,535	3,407	19%	19%	17%	18%	16%	283	9%
Alternative Loans	156	257	458	494	586	1%	1%	2%	2%	3%	430	276%
Unmet Need	\$2,822	\$3,435	\$4,239	\$3,953	\$5,192	17%	20%	23%	20%	25%	2,370	84%
*Amount Borrowed to meet EFC	\$1,385	\$2,505	\$2,474	\$3,258	\$2,968	9%	14%	13%	16%	14%	1,583	114%

Income Between \$80,000 to \$100,000

	FY03	FY04	FY05	FY06	FY07	FY03	FY04	FY05	FY06	FY07	# Change FY03-FY07	% Change FY03-FY07
Total Enrolled for 9 months (N)	148	205	202	223	179						31	21%
	Avg. Dollar Amount					Percent Cost of Attendance						
Cost of Attendance	\$17,321	\$18,375	\$20,221	\$20,938	\$20,716						\$3,395	20%
Less Expected Family Contribution*	11,402	11,845	12,539	13,369	13,491	66%	64%	62%	64%	65%	2,089	18%
Financial Need	5,919	6,530	7,682	7,569	7,225	34%	36%	38%	36%	35%	1,306	22%
Less Grant Aid	1,373	1,414	1,454	1,701	1,558	8%	8%	7%	8%	8%	185	13%
Unmet Need After Grant Aid	\$4,546	\$5,116	\$6,228	\$5,868	\$5,667	26%	28%	31%	28%	27%	1,121	25%
% Grant Aid that Met Financial Need	23%	22%	19%	22%	22%							
Non-Grant Sources to Meet Remaining Unmet Financial Need	Avg. Dollar Amount					Percent Cost of Attendance						
College Work Study	\$20	\$32	\$18	\$0	\$0	0%	0%	0%	0%	0%	-20	-100.00%
Need-based Loans	2,759	2,805	3,020	2,828	2,724	16%	15%	15%	14%	13%	-35	-1%
Alternative Loans	182	276	323	457	283	1%	2%	2%	2%	1%	101	55%
Unmet Need	\$1,585	\$2,003	\$2,867	\$2,583	\$2,660	9%	11%	14%	12%	13%	1,075	68%
*Amount Borrowed to meet EFC	\$2,475	\$3,105	\$3,518	\$3,679	\$4,131	14%	17%	17%	18%	20%	1,656	67%

Income > \$100,000

	FY03	FY04	FY05	FY06	FY07	FY03	FY04	FY05	FY06	FY07	# Change FY03-FY07	% Change FY03-FY07
Total Enrolled for 9 months (N)	82	122	136	141	111						29	35%
	Avg. Dollar Amount					Percent Cost of Attendance						
Cost of Attendance	\$17,456	\$18,272	\$19,972	\$20,570	\$21,771						\$4,315	25%
Less Expected Family Contribution*	11,136	12,443	13,558	13,774	13,404	64%	68%	68%	67%	62%	2,268	20%
Financial Need	6,320	5,829	6,414	6,796	8,367	36%	32%	32%	33%	38%	2,047	32%
Less Grant Aid	1,299	1,265	1,291	1,175	1,472	7%	7%	6%	6%	7%	173	13%
Unmet Need After Grant Aid	\$5,021	\$4,564	\$5,123	\$5,621	\$6,895	29%	25%	26%	27%	32%	1,874	37%
% Grant Aid that Met Financial Need	21%	22%	20%	17%	18%							
Non-Grant Sources to Meet Remaining Unmet Financial Need	Avg. Dollar Amount					Percent Cost of Attendance						
College Work Study	\$0	\$0	\$0	\$0	\$0	0%	0%	0%	0%	0%	0	#DIV/0!
Need-based Loans	2,815	2,129	2,551	2,795	2,922	16%	12%	13%	14%	13%	107	4%
Alternative Loans	448	376	276	391	824	3%	2%	1%	2%	4%	376	84%
Unmet Need	\$1,758	\$2,059	\$2,296	\$2,435	\$3,149	10%	11%	11%	12%	14%	1,391	79%
*Amount Borrowed to meet EFC	\$2,815	\$2,963	\$3,176	\$4,300	\$4,570	16%	16%	16%	21%	21%	1,755	62%

Source: UIDS
IR&P/LCB 07/08