

**ENROLLMENT SUMMARY REPORT
FALL 2013**

Dr. La Shonda Carter-Boone
Senior Institutional Research Analyst

Office of Institutional Research & Planning
714 Lewis Hall
University of Missouri System

December 2013

IR&P 2013, Report 4

<http://www.umsystem.edu/ums/aa/planning//>

FALL 2013 ENROLLMENT SUMMARY

Executive Summary

This report summarizes the status and trends in fall enrollment at the University of Missouri's four campuses. The report includes information about enrollment, full-time equivalence, new students on campus, undergraduate transfer students, full/part-time status, gender and ethnicity information.

Please note that enrollment totals in this report follow federal and state guidelines, which recommend that students who are classified as "exclusive auditors" are not included in enrollment figures. Consequently, students who are classified as "exclusive auditors" are not included in the campus totals. (Exclusive auditors are defined as students who are enrolled exclusively in courses that are not taken for credit.)

Highlights of the report include:

- The University of Missouri System enrolled a record 75,272 students in Fall 2013, 228 more students than the record 75,044 students that enrolled in Fall 2012. Total enrollment at the University has increased by 21% over the past 10 years (Table 1).
- In Fall 2013, the University of Missouri System enrolled 56,869 undergraduate students (76% of total headcount), 3,179 first professional students (4%), and 15,224 graduate students (20%) (Table 1).
- Over the past 10 years, undergraduate headcount has increased by 21%, first-professional headcount by 17% and graduate headcount by 22% (Table 1).
- Since 2009, total student credit hours and total full-time equivalence have both increased by 9% (Table 2.0).
- Over the past five years, total full-time resident headcount has increased 3% (Table 4.0a) and total full-time non-resident headcount has increased 39% (Table 4.0b).
- Women comprised 52% of total enrollment in Fall 2013. UM-St. Louis had the largest percentage of women (60%) and MO S&T had the highest proportion of men (77%) (Table 5).
- Of all the students of known ethnicity, under-represented minorities (American Indian/Alaskan Native,

Technical Notes

These tables provide counts of students enrolled in the fall of 2013 on-schedule credit courses at the four campuses of the University of Missouri. Five and ten-year trend data are included in the tables for comparison purposes. The data used in this report were generated from the EMSAS Fall Enrollment files, which are submitted to the Missouri Department of Higher Education (MDHE) each fall. Data included in EMSAS files were prepared in the admissions and registration offices at the respective campuses. The data are counts as of the census date at each campus, which is defined as the end of the fourth week of classes for the fall session. The source data are based on the reporting guidelines and definitions of the Missouri Department of Higher Education (MDHE) and the National Center for Educational Statistics (NCES).

Tables in the Table 2 series (2.0-2.4) include counts of on- and off-campus students. The columns titled "On-Campus", according to the MDHE guidelines, include students enrolled geographically on campus and students in the Graduate Engineering (Residence) Centers. All other students are counted in the columns headed "Off-Campus", which include students enrolled in extension courses and students that receive H.S. advanced credit from the Kansas City and St. Louis campuses. The tables of the Table 2 series also include full-time equivalence (FTE) counts.

Tables in the Table 4 series (4.0a-4.4b) include counts of resident and non-resident students by level and course load (full-time vs. part-time).

Definitions of FTE:

Undergraduate FTE = Total Student Credit Hours/15

Graduate FTE = Total Student Credit Hours/12

Dentistry FTE = Headcount

Law FTE = Total Student Credit Hours/15

UMC Medicine FTE = Headcount

UMKC Medicine FTE = Headcount

Optometry FTE = Headcount

Pharmacy FTE = Headcount

Vet Medicine FTE = Headcount

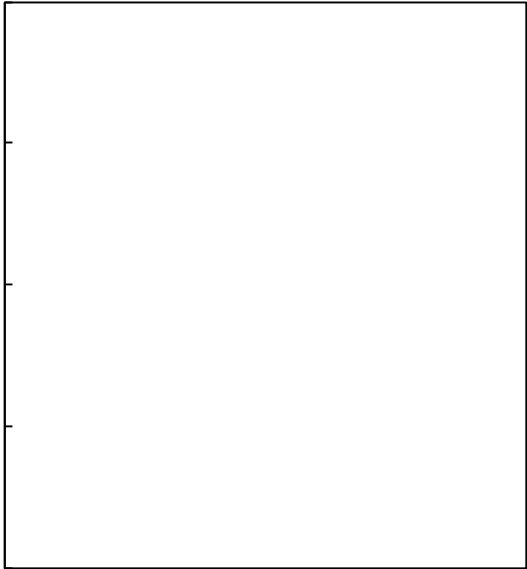
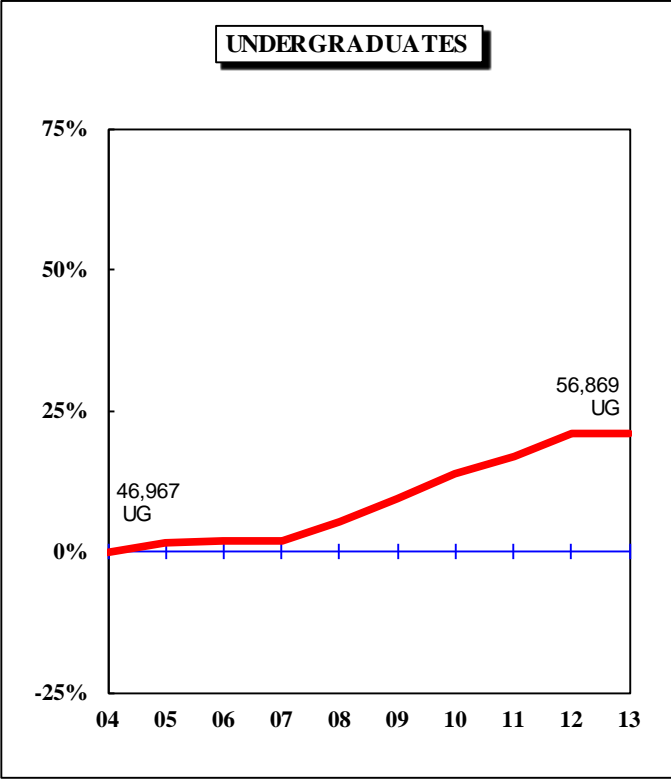
Caveats

First- and second-year students in the Medicine MD program at UMKC are included in the undergraduate counts of the Table 2 and Table 4 series.

Enrollment counts for students in "Off-Schedule" courses, which include intersession courses, short courses, Video Credit courses, and other courses which begin and end on dates other than those for the regular academic semester, are accumulated during the term in which the courses began and are reported the semester following their end date.

**Figure 1: Rate of Change in Fall Headcount by Student Level and Campus,
Fall 2004 to Fall 2013**

UNIVERSITY OF MISSOURI SYSTEM



**Figure 1.1: Rate of Change in Fall Headcount by Student Level and Campus,
Fall 2004 to Fall 2013**
UNIVERSITY OF MISSOURI-COLUMBIA

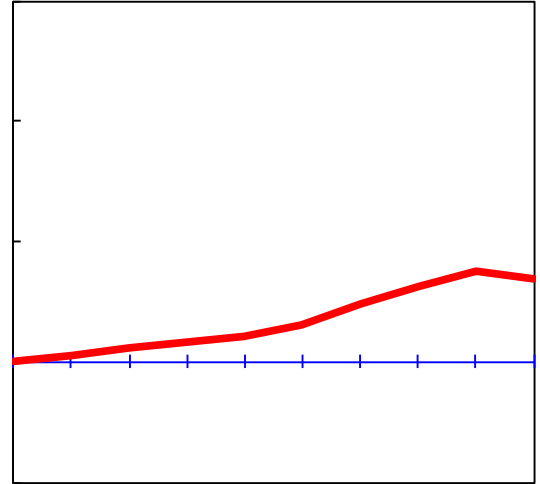
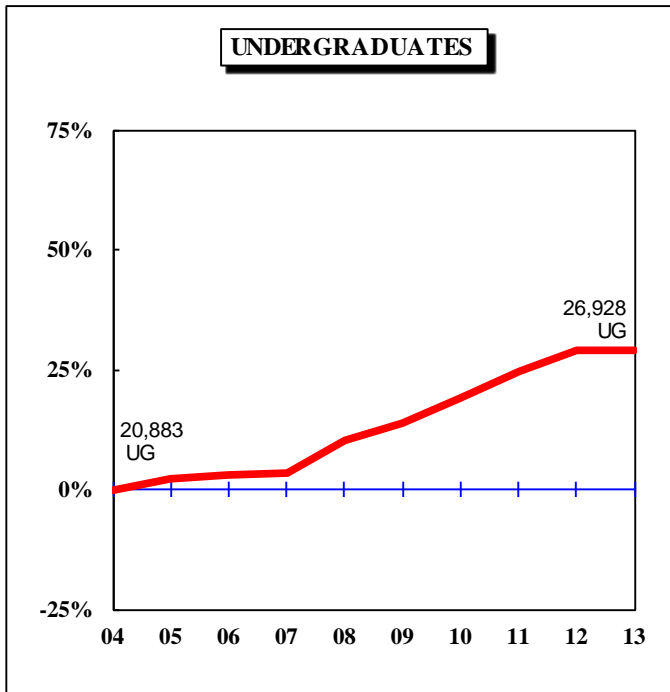


Figure 1.2: Rate of Change in Fall Headcount by Student Level and Campus, Fall 2004 to Fall 2013

UNIVERSITY OF MISSOURI-KANSAS CITY

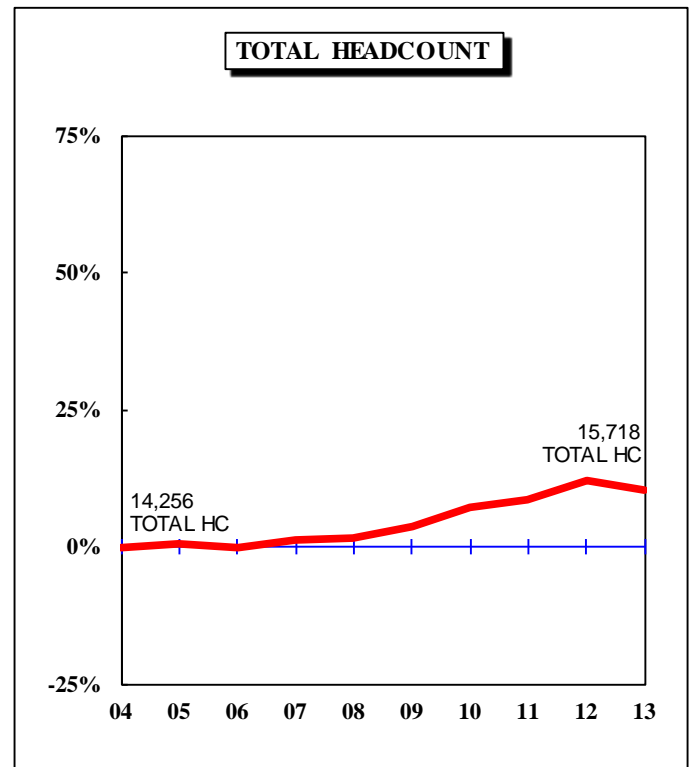
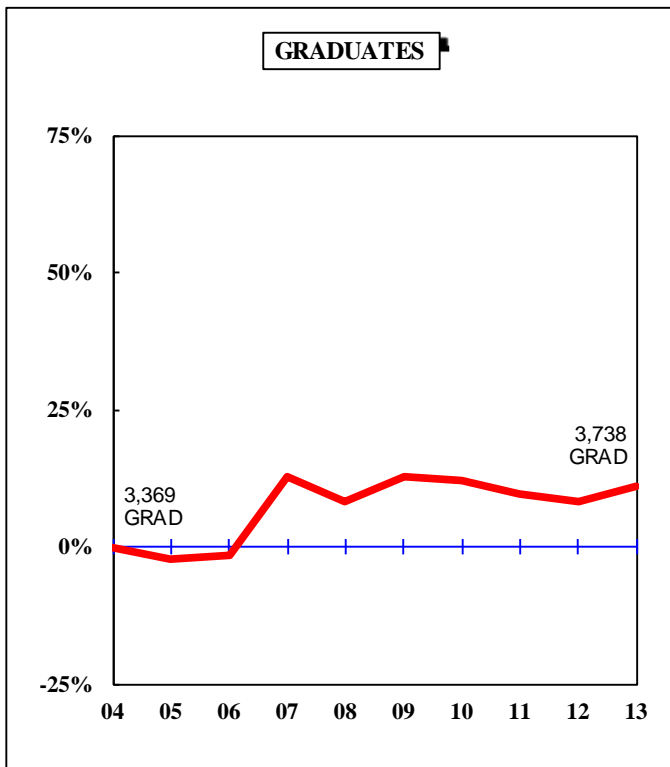
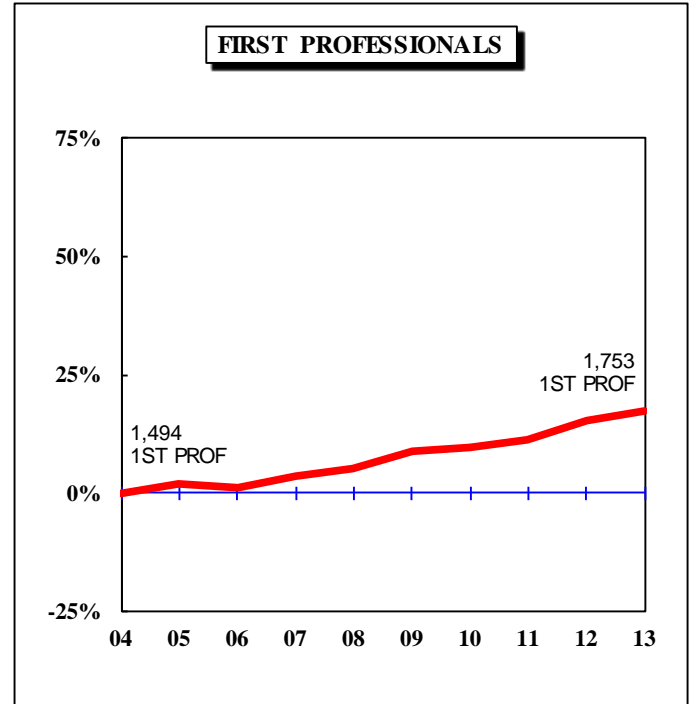
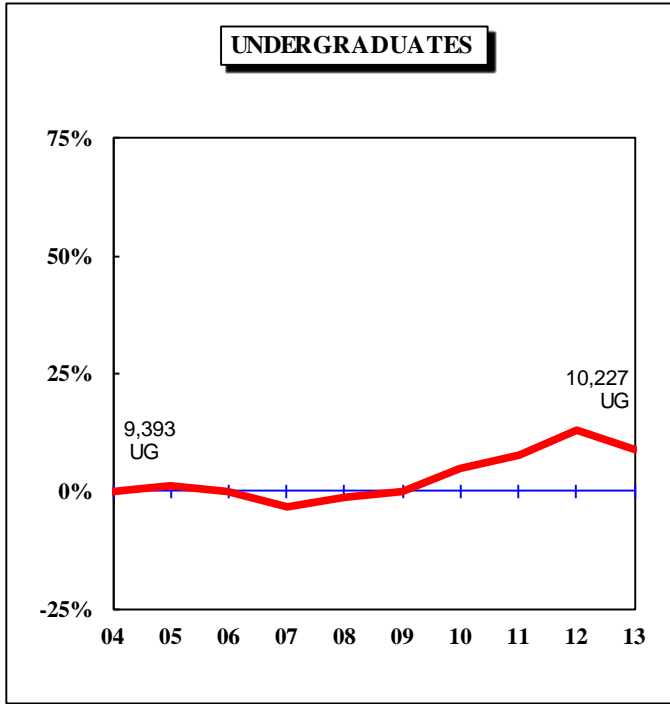
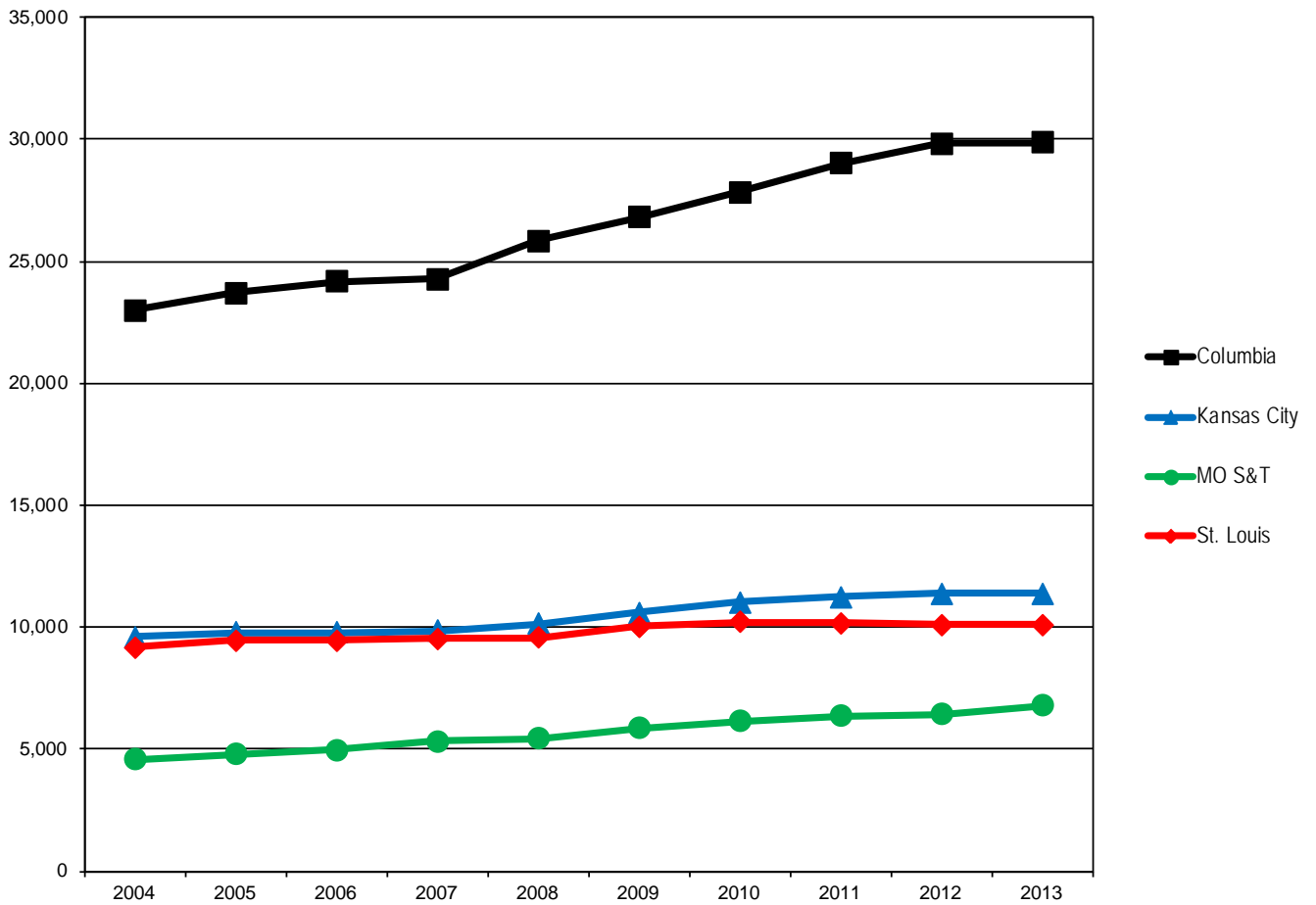


Figure 1.4: Rate of Change in Fall Headcount by Student Level and Campus,

Table 1. Headcount History by Student Level and Campus, Fall 2004 to Fall 2013

Campus	Level	2004	2005	2006	2007	2008	2009	2010	2011	2012	2013	10-yr. Change
Columbia	Undergraduate	20,883	21,335	21,484	21,586	22,980	23,799	24,834	25,992	26,960	26,928	

Figure 2. Full-time Equivalence History by Campus, 2004 to 2013



Source: EMSAS Fall Enrollment file
IR&P/LCB 10/10/13

Full-time Equivalent History by Campus, 2004 to 2013

Campus	2004	2005	2006	2007	2008	2009	2010	2011	2012	2013
Columbia	23,000.0	23,703.6	24,182.7	24,280.4	25,840.2	26,797.4	27,838.4	29,020.4	29,845.0	29,874.8
Kansas City	9,607.7	9,795.3	9,797.9	9,843.8	10,152.4	10,597.5	11,042.8	11,255.7	11,387.0	11,391.3
MO S&T	4,594.1	4,799.9	4,982.6	5,323.0	5,452.9	5,860.4	6,162.2	6,376.5	6,453.0	6,793.5
St. Louis	9,162.0	9,451.9	9,467.5	9,546.9	9,578.5	10,031.8	10,227.7	10,188.8	10,121.0	10,101.9
Total	46,363.8	47,750.7	48,430.7	48,994.0	51,023.9	53,287.1	55,271.1	56,841.4	57,806.0	58,161.5

(Totals may not add due to rounding.)

Table 2.0 Headcounts, Full-time Equivalence, and Student Credit Hours by Location, Fall 2009 to Fall 2013

	FS09	FS10	FS11	FS12	FS13	FS09	FS10	FS11	FS12	FS13	FS09	FS10	FS11	FS12	FS13	5-yr. Change
Headcount by Student Level																
Undergraduate																
Fresh & Soph DS	19,833	20,398	21,047	21,450	21,034	46	66	60	64	37	19,879	20,464	21,107	21,514	21,071	6%
Junior & Senior DS	25,161	26,464	27,168	27,723	28,354	283	389	505	532	461	25,444	26,853	27,673	28,255	28,815	13%
Nondegree	<u>859</u>	<u>822</u>	<u>926</u>	<u>1,038</u>	<u>1,050</u>	<u>5,170</u>	<u>5,219</u>	<u>5,230</u>	<u>5,943</u>	<u>5,933</u>	<u>6,029</u>	<u>6,041</u>	<u>6,156</u>	<u>6,981</u>	<u>6,983</u>	<u>16%</u>
Total Undergraduate	45,853	47,684	49,141	50,211	50,438	5,499	5,674	5,795	6,539	6,431	51,352	53,358	54,936	56,750	56,869	11%
First Professional																

Table 2.1 Headcounts, Full-time Equivalence, and Student Credit Hours by Location, Fall 2009 to Fall 2013

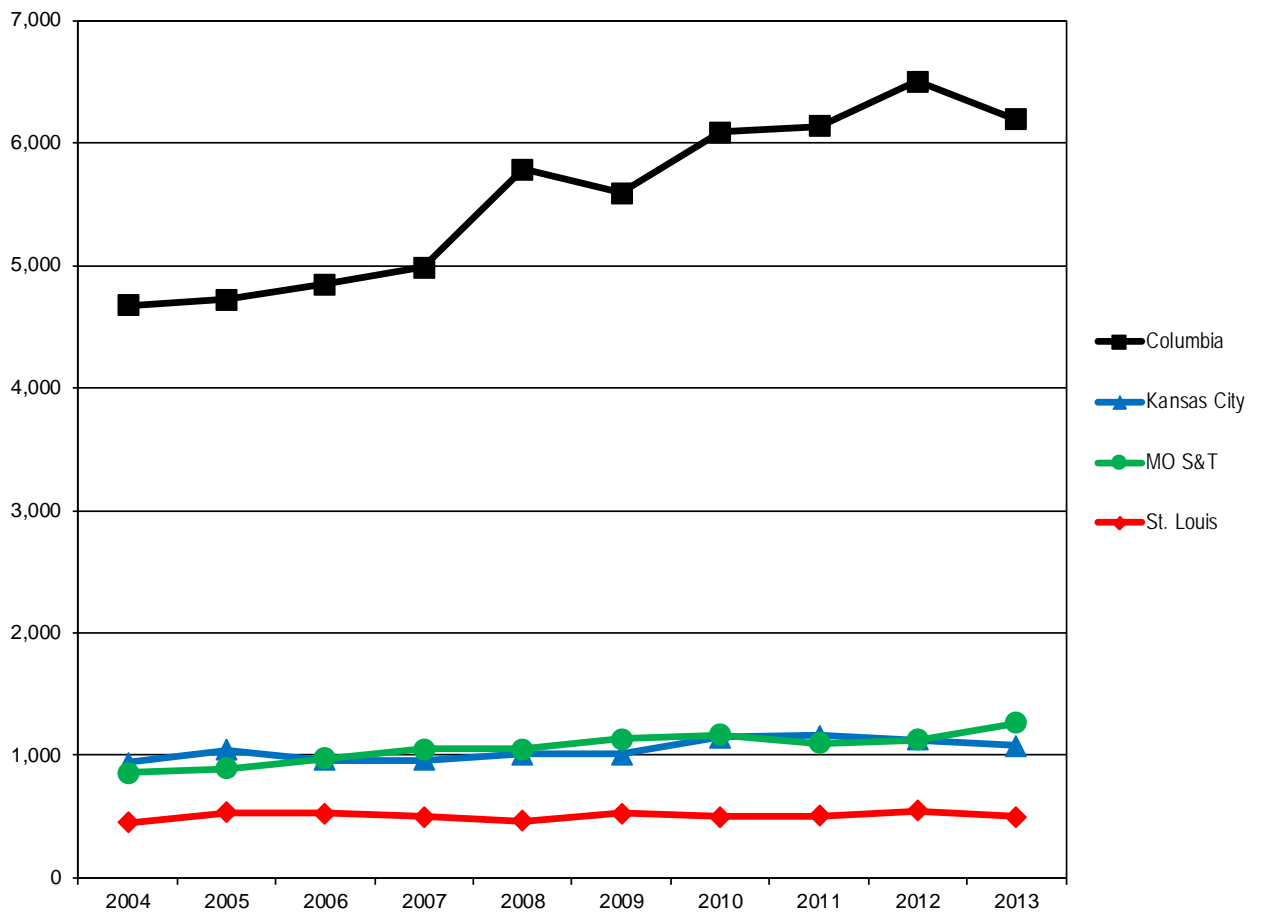
	FS09	FS10	FS11	FS12	FS13	FS09	FS10	FS11	FS12	FS13	FS09	FS10	FS11	FS12	FS13	5-yr. Change
Headcount by Student Level																
Undergraduate																
Fresh & Soph DS	12,069	12,548	13,088	13,467	13,397	25	21	24	35	20	12,094	12,569	13,112	13,502	13,417	11%
Junior & Senior DS	11,247	11,811	12,304	12,754	12,906	187	222	270	333	262	11,434	12,033	12,574	13,087	13,168	15%
Nondegree	<u>200</u>	<u>166</u>	<u>233</u>	<u>289</u>	<u>230</u>	<u>71</u>	<u>66</u>	<u>73</u>	<u>82</u>	<u>113</u>	<u>271</u>	232				

Table 2.2 Headcounts, Full-time Equivalence, and Student Credit Hours by Location, Fall 2009 to Fall 2013

Table 2.4 Headcounts, Full-time Equivalence, and Student Credit Hours by Location, Fall 2009 to Fall 2013

	FS09	FS10	FS11	FS12	FS13	FS09	FS10	FS11	FS12	FS13	FS09	FS10	FS11	FS12	FS13	
Headcount by Student Level																
Undergraduate																
Fresh & Soph DS	2,347	2,262	2,315	2,165												

Figure 3a. On-Campus First-time College Freshmen History, 2004 to 2013



Source: EMSAS Fall Enrollment file
IR&P/LCB 10/10/13

On-Campus First-time College Freshmen History, 2004 to 2013

Campus	2004	2005	2006	2007	2008	2009	2010	2011	2012	2013
Columbia	4,673	4,720	4,842	4,981	5,780	5,589	6,087	6,137	6,498	6,187
Kansas City	939	1,048	959	959	1,008	1,007	1,147	1,161	1,125	1,078
MO S&T	856	892	977	1,050	1,055	1,132	1,170	1,101	1,125	1,263
St. Louis	451	536	530	502	468	527	502	508	547	500
Total	6,919	7,196	7,308	7,492	8,311	8,255	8,906	8,907	9,295	9,028

On-Campus New Graduate Student History by Campus, 2004 to 2013

Campus	2004	2005	2006	2007	2008	2009	2010	2011	2012	2013
Columbia	873	939	1,046	1,266	1,274	1,272	1,367	1,452	1,346	1,342
Kansas City	848	882	826	973	1,005	1,005	1,076	922	963	1,061
MO S&T	212	228	251	250	245	290	305	248	219	316
St. Louis	570	603	674	652	736	792	775	720	648	686
Total	2,503	2,652	2,797	3,141	3,260	3,359	3,523	3,342	3,176	3,405

On-Campus New First Professional Student History By Campus, 2004 to 2013

Campus	2004	2005	2006	2007	2008	2009 -0 0 7.6946 407.66505
---------------	-------------	-------------	-------------	-------------	-------------	-----------------------------------

First-time On-Campus Undergraduate Transfer Student History by Campus, 2004 to 2013

Campus	2004	2005	2006	2007	2008	2009	2010	2011	2012	2013
Columbia	1,295	1,281								

Level	2009	2010	2011	2012	2013	5 yr. Change
Undergraduate						
Freshman & Soph DS	14,514	14,609	14,856	14,641	13,845	-5%
Junior & Senior DS	17,441	18,223	18,419	18,715	19,092	9%
Nondegree	126	151	157	160	206	63%
Total System Full-time Resident Undergraduate	32,081	32,983	33,432	33,516	33,143	3%
First Professional						
Dentistry (DDS)	286	298	308	308	307	7%
Law (JD)	797	755	732	692	648	-19%
Medicine (MD)	649	633	644	656	633	-2%
Optometry (OD)	86	74	65	60	64	-26%
Pharmacy (Dpharm)	320	327	335	390	394	23%
Vet. Med (DVM)	264	301	344	386	384	45%
Total System Full-time Resident 1st Professional	2,402	2,388	2,428	2,492	2,430	1%
Graduate						
Masters & PhD EdS						

Table 4.0b Non-Resident Headcount History by Student Level, Load, and Campus, Fall 2009 to Fall 2013

Level	2009	2010	2011	2012	2013	5 yr. Change
Undergraduate						
Freshman & Soph DS	4,119	4,629	4,928	5,599	5,998	46%
Junior & Senior DS	3,128	3,469	3,819	3,996	4,167	33%
Nondegree	142	168	241	290	270	90%
Total System Full-time Non-Resident Undergraduate	7,389	8,266	8,988	9,885	10,435	41%
First Professional						
Dentistry (DDS)	115	107	112	117	118	3%
Law (JD)	112	136	127	136	159	42%
Medicine (MD)	120	147	154	162	190	58%
Optometry (OD)	93	97	107	108	108	16%
Pharmacy (Dpharm)	19	25	28	31	30	58%
Vet. Med (DVM)	57	65	69	67	78	37%
Total System Full-time Non-Resident 1st Professional	516	577	597	621	683	32%
Graduate						
Masters & Ed. Spec.	1,875	1,770	1,943	2,052	2,373	27%
Doctoral	1,208	1,597	1,695	1,683	1,775	47%
Nondegree	31	41	36	38	36	16%
Total System Full-time Non-Resident Graduate	3,114	3,408	3,674	3,773	4,184	34%
Total System Full-time Non-Resident Headcount	11,019	12,251	13,259	14,279	15,302	39%
Undergraduate						
Freshman & Soph DS	187	234	273	311	315	68%
Junior & Senior DS	609	643	734	758	870	43%
Nondegree	193	175	166	165	178	-8%
Total System Part-time Non-Resident Undergraduate	989	1,052	1,173	1,234	1,363	38%
First Professional						
Law (JD)	8	6	7	11	13	63%
Medicine (MD)	0	0	0	0	0	-
Total System Part-time Non-Resident 1st Professional	8	6	7	11	13	63%
Graduate						
Masters & Ed. Spec.	1,713	1,834	1,948	1,960	1,963	15%
Doctoral	884	600	662	673	704	-20%
Nondegree	203	214	201	257	226	11%
Total System Part-time Non-Resident Graduate	2,800	2,648	2,811	2,890	2,893	3%
Total System Part-time Non-Resident Headcount	3,797	3,706	3,991	4,135	4,269	12%
Undergraduate						
Freshman & Soph DS	4,306	4,863	5,201	5,910	6,313	47%
Junior & Senior DS	3,737	4,112	4,553	4,754	5,037	35%
Nondegree	335	343	407	455	448	34%
Total System Non-Resident Undergraduate	8,378	9,318	10,161	11,119	11,798	41%
First Professional						
Dentistry (DDS)	115	107	112	117	118	3%
Law (JD)	120	142	134	147	172	43%
Medicine (MD)	120	147	154	162	190	58%
Optometry (OD)	93	97	107	108	108	16%
Pharmacy (Dpharm)	19	25	28	31	30	58%
Vet. Med (DVM)	57	65	69	67	78	37%
Total System Non-Resident 1st Professional	524	583	604	632	696	33%
Graduate						
Masters & Ed. Spec.	3,588	3,604	3,891	4,012	4,336	21%
Doctoral	2,092	2,197	2,357	2,356		

Table 4.1a Resident Headcount History by Student Level, Load, and Campus, Fall 2009 to Fall 2013

Level	2009	2010	2011	2012	2013	5 yr. Change
Undergraduate Freshman & Soph DS						

65%



Table 4.2a Resident Headcount History by Student Level, Load, and Campus, Fall 2009 to Fall 2013

Level	2009	2010	2011	2012	2013	5 yr. Change
Undergraduate						
Freshman & Soph DS	2,067	2,125	2,183	2,241	2,041	-1%
Junior & Senior DS	2,421	2,668	2,631	2,563	2,668	10%
Nondegree	6	11	7	8	10	67%
Total UMKC Full-time Resident Undergraduate	4,494	4,804	4,821	4,812	4,719	5%
First Professional						
Dentistry (DDS)	286	298	308	308	307	7%
Law (JD)	388	357	330	325	309	-20%
Medicine (MD)	274	261	267	272	269	-2%
Pharmacy (Dpharm)	320	327	335	390	394	23%
Total UMKC Full-time Resident 1st Professional	1,268	1,243	1,240	1,295	1,279	1%
Graduate						
Masters & Ed. Spec.	492	534	522	452	456	-7%
Doctoral	34	51	53	50	64	88%

Table 4.3b Non-Resident Headcount History by Student Level, Load, and Campus, Fall 2009 to Fall 2013

Level	2009	2010	2011	2012	2013	5 yr. Change
Undergraduate						
Freshman & Soph DS	463	465	458	506	493	6%
Junior & Senior DS	459	536	582	569	571	24%
Nondegree	10	5	9	31	35	250%
Total MO S&T Full-time Non-Resident Undergraduate	932	1,006	1,049	1,106	1,099	18%
Graduate						
Masters & Ed. Spec.	438	411	447	457	597	36%
Doctoral	281	320	361	362	390	39%
Nondegree	0	7	0	1	0	
Total MO S&T Full-time Non-Resident Graduate	719	738	808	820	987	37%
Total Missouri S&T Full-time Non-Resident Headcount	1,651	1,744	1,857	1,926	2,086	26%
Undergraduate						
Freshman & Soph DS	11	48	21	24	37	236%
Junior & Senior DS	38	55	87	76	137	261%
Nondegree	12	7	10	6	3	-75%
Total MO S&T Part-time Non-Resident Undergraduate	61	110	118	106	177	190%
Graduate						
Masters & Ed. Spec.	350	366	408	409	445	27%
Doctoral	30	35	45	49	53	77%
Nondegree	4	5	7	23	10	150%
Total MO S&T Part-time Non-Resident Graduate	384	406	460	481	508	32%
Total Missouri S&T Part-time Non-Resident Headcount	445	516	578	587	685	54%
Undergraduate						
Freshman & Soph DS	474	513	479	530	530	12%
Junior & Senior DS	497	591	36 h.-233-34(S)JTJf 0-023068 3-1(m)			

Table 4.4b Non-Resident Headcount History by Student Level, Load, and Campus, Fall 2009 to Fall 2013

Level	2009	2010	2011	2012	2013
--------------	-------------	-------------	-------------	-------------	-------------

Table 5. Headcount Students by Gender and Ethnicity (continued)

Data - Classification	HC	%	HC	%	HC	%	HC	%	HC	%
B. Ethnicity *										
Am Indian/Alaskan Native										
First-time DS Freshmen	14	0%	4	0%	0	0%	7	2%	25	0%
Other Undergraduate	52	0%	27	0%	24	1%	40	0%	143	0%
First Professional	12	1%	9	1%	0	-	1	1%	22	1%
Graduate	<u>19</u>	0%	<u>10</u>	0%	<u>5</u>	0%	<u>12</u>	0%	<u>46</u>	0%
Total	97	0%	50	0%	29	0%	60	0%	236	0%
Asian										
First-time DS Freshmen										