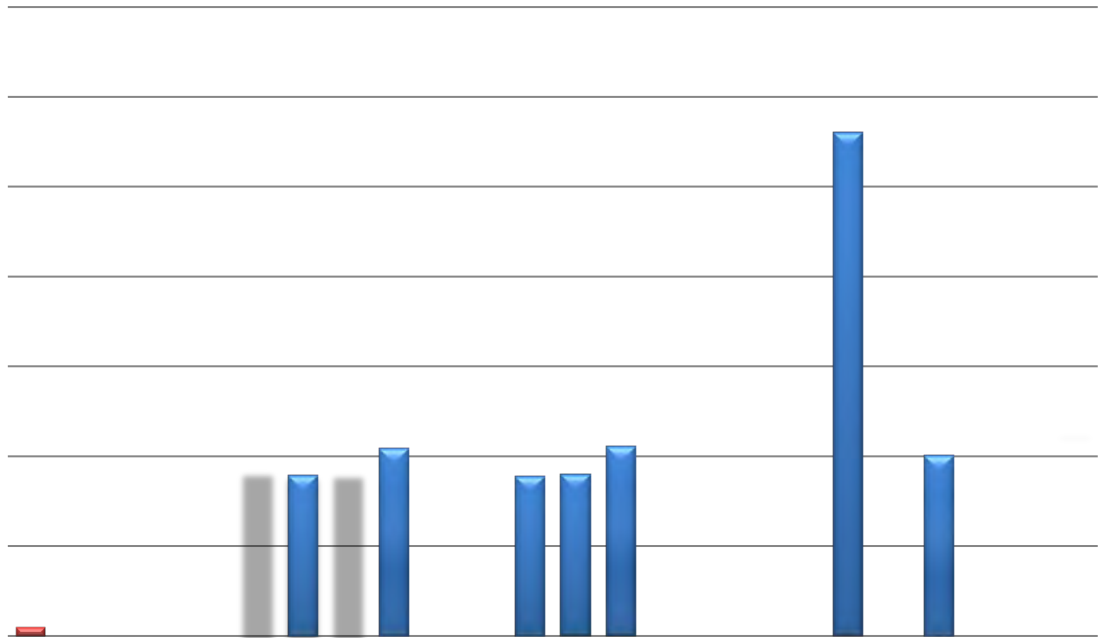




	FY2012	FY2013	FY2014	FY2015	FY2016	FY2017	FY2018	FY2019	FY2020***	FY2021***
Columbia	7,848	8,082	8,220	8,220	8,286	8,286	8,460	8,637	9,120	9,330
Kansas City	7,737	7,968	8,103	8,103	8,169	8,169	8,340	8,514	8,991	9,198
Rolla	7,848	8,082	8,220	8,220	8,286	8,286	8,460	8,637	9,120	9,330
St Louis	7,737	7,968	9,474*	9,474	10,065**	10,065	10,275	10,491	11,079	11,328



	FY2012	FY2013	FY2014	FY2015	FY2016	FY2017	FY2018	FY2019	FY2020***	FY2021***
Columbia	8,989	9,257	9,415	9,433	9,509	9,518	9,787	9,972	10,477	10,723
Kansas City	9,029	9,299	9,456	9,476	9,553	9,563	9,763	9,967	10,471	10,785
Rolla	9,084	9,350	9,510	9,529	9,620	9,629	9,831	10,037	10,567	10,818
St Louis	9,038	9,314	9,474*	9,474	10,065**	10,065	10,275	10,491	11,079	11,328



\*\* Includes a student approved Recreationu4.ud (es)-1 (d)-0.6 (d W)a>r0.6 ( s)-1 (t)-0.8 (ud)-0.60.6 (7)-0.6 (4)]TJ -39.667 Td [(\*)-0.9 (\*)-0.9 ( l)-0.7

Louis.

This waiver is the result of university and state budget arrangements and may not continue in the future.